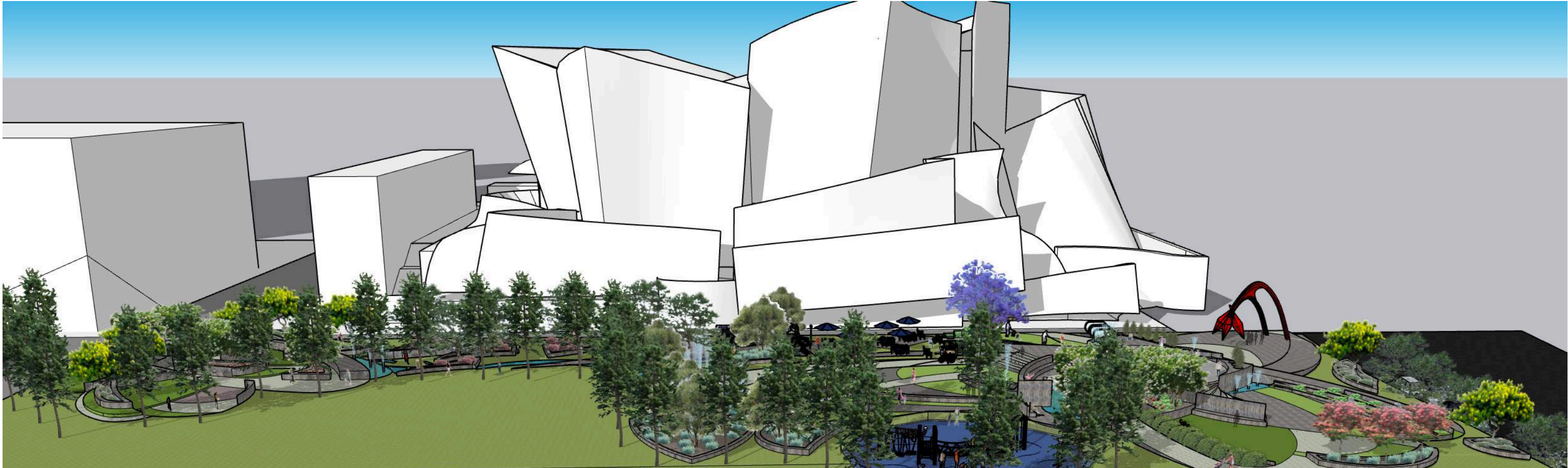


# LD7 BOOK



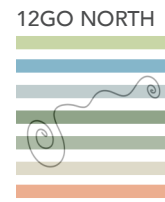
# CONTENTS

PART 1  
 DESIGN NARRATIVE - Water Theme.....1 - 17  
 Produced by Group 1  
 Simone Drucker  
 Rachael Dwork  
 Vicki Rand  
 Mary Diane Rasmussen  
 Janet Teller  
 Cynthia Tribull  
 Theo Vuduris

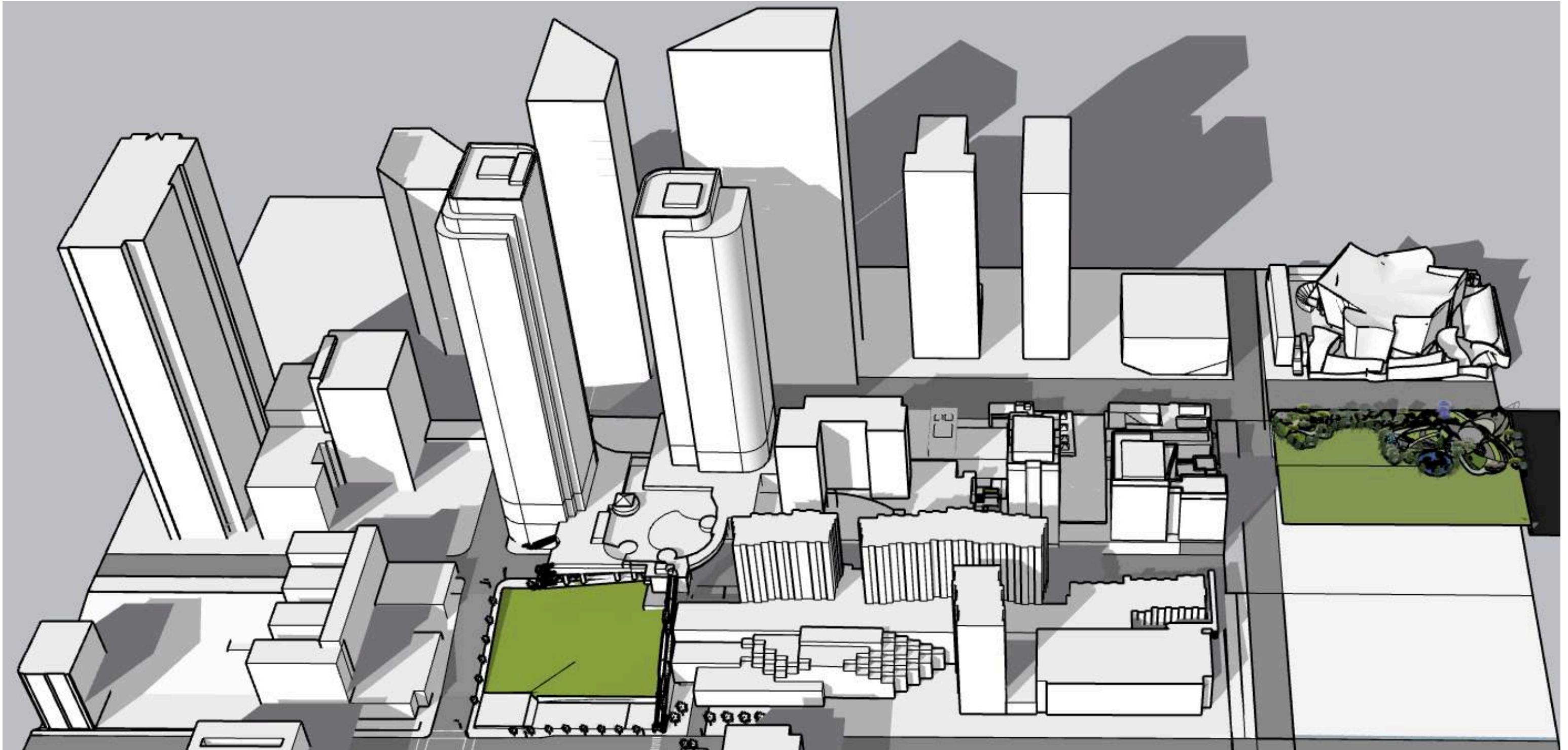
PART 2  
 DESIGN PROPOSAL  
 2a. Team master Plan - produced by Group 1.....1  
 2b. Individual Designs - produced by Cynthia Tribull  
 1. Key Components of Group site analysis that relate to individual design proposal..... 3  
 2. Precedent Studies.....4  
 3. Concept Sketches.....8  
 4. Schematic Design Sketches.....9  
 5. Detailed Schematic Design.....10  
 6. Design Development Studies.....11

7. Final Design  
 a. Final Design Narrative.....13  
 •Main Entrance.....14  
 •Shaded Seating and Bioswale.....15  
 •Dining Area.....16  
 •Event Space.....17  
 •Playground and water Feature.....18  
 •Temporary Shelter for Unhoused.....19  
 •1st Street Shops and Pedestrian Entrance.....20  
 b. Overall Site Landscape Plan.....13  
 c. Plan Enlargements of individual select spaces.....14 - 20  
 d. Illustrative Sections/or elevations.....14 - 19  
 e. Planting Plan.....21 - 22  
 f. Site Materials Plan.....23  
 f. Select Details that reinforce big idea.....14 - 19  
 g. 3D renderings.....14 - 20  
 8. Bibliography.....21

PART 3  
 Appendix:  
 3a. Site Analysis - entire class site Analysis.....1 - 90



# LD7 BOOK DESIGN NARRATIVE

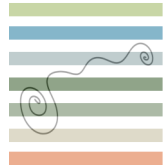


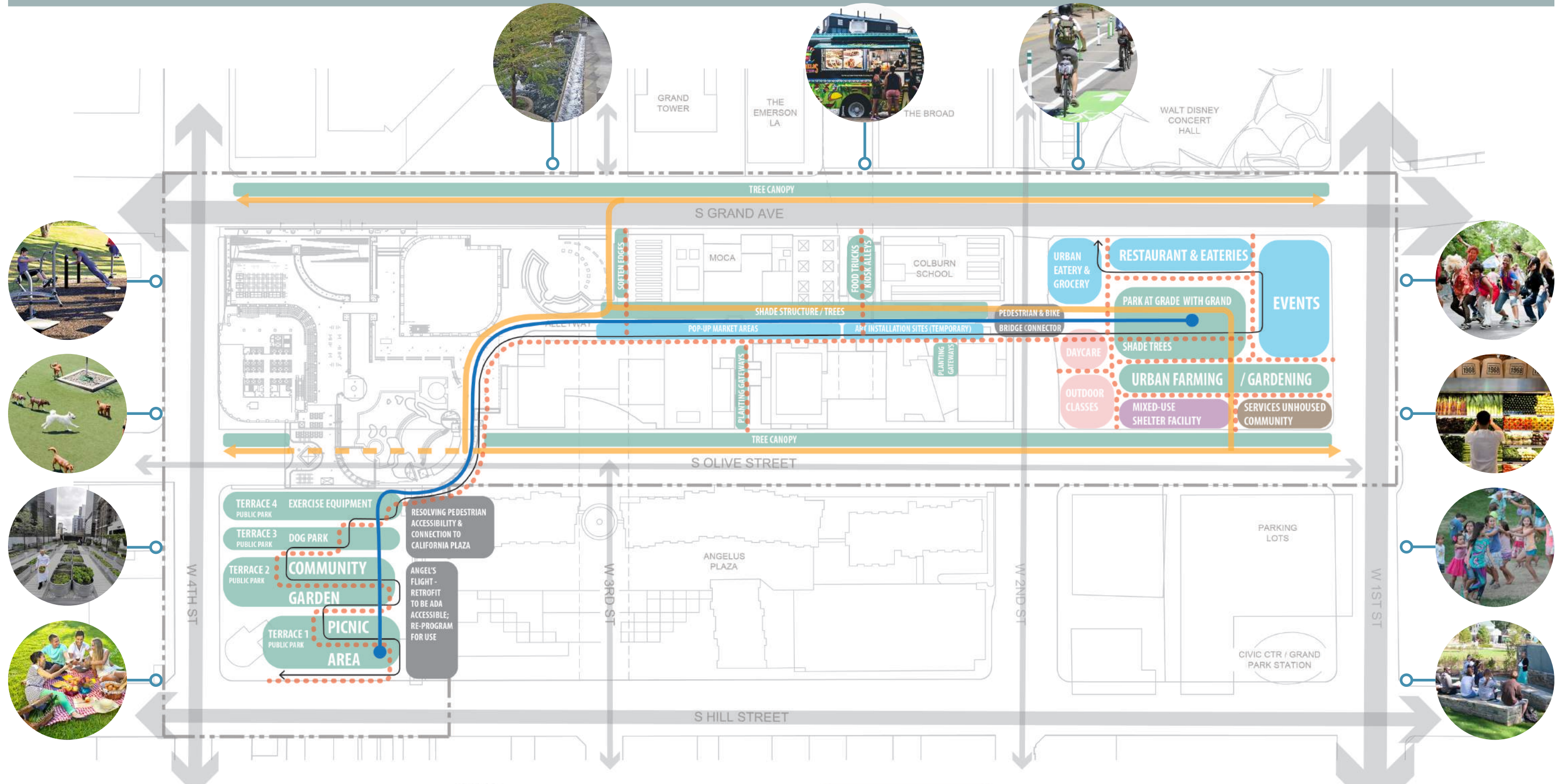
12GO NORTH



Cynthia Tribull

# LD7 BOOK DESIGN PROPOSAL





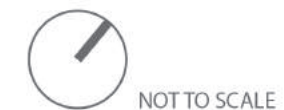
References:

- <https://unsplash.com/s/photos/food-truck>
- <https://www.phillymag.com/things-to-do/dog-parks-philadelphia/>
- <https://bouldercolorado.gov/transportation/bike>
- <http://bhscreek.org/outdoor-classrooms-and-bridges/outdoor-classrooms-2/>
- <https://www.latimes.com/local/california/la-me-beat-urban-farming-20141112-story.html>
- <https://www.lamag.com/citythinkblog/erewhon-shopping/>
- <https://www.shutterstock.com/image-photo/group-young-attractive-friends-having-picnic-134123828>
- <https://kid101.com/free-things-to-do-in-san-antonio-this-weekend-33-35/dance-in-the-park-3/>
- <https://tclf.org/landscapes/fountain-place>
- <https://www.columbiacommunityconnection.com/>

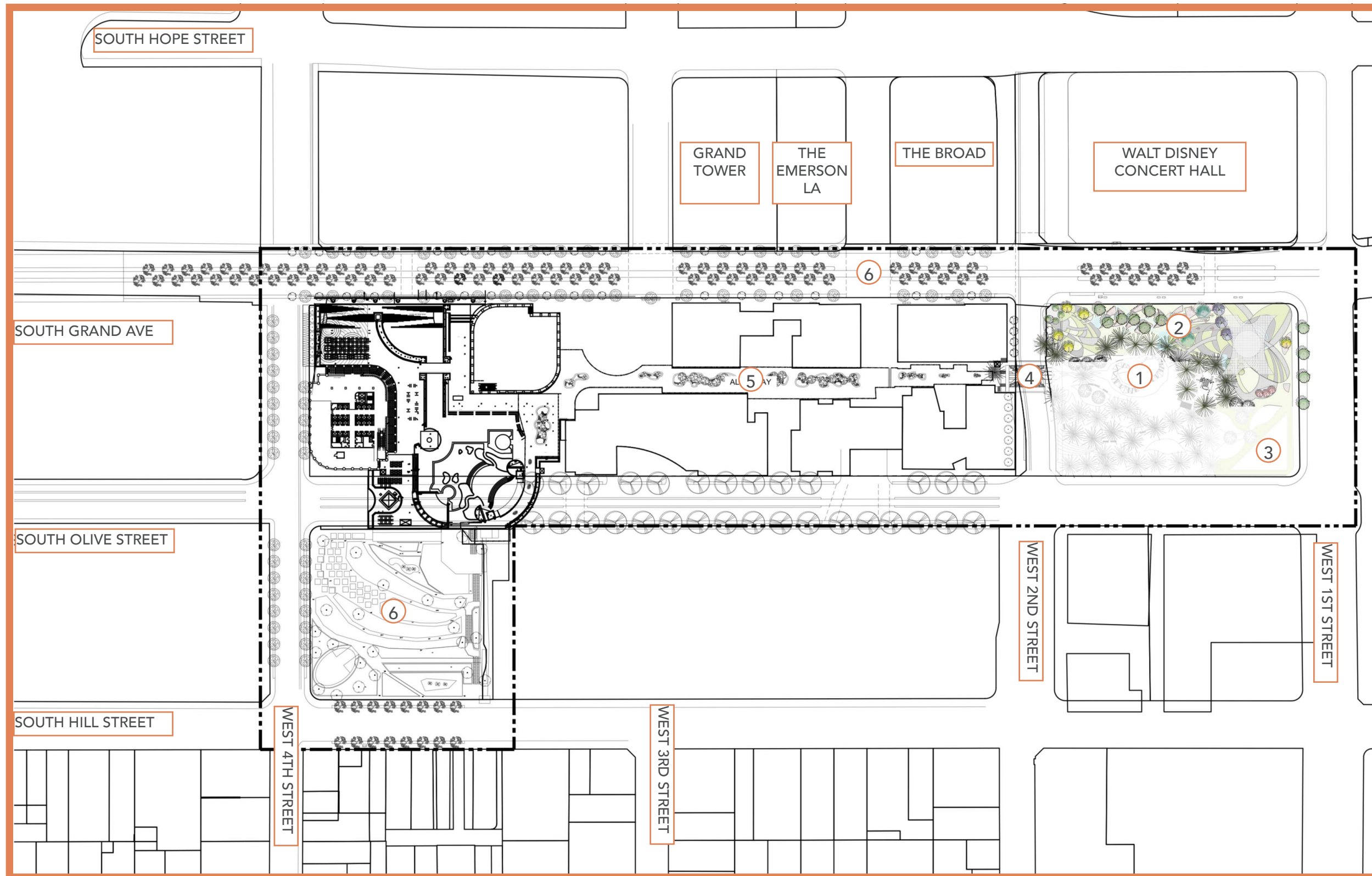
LEGEND

- WATER FEATURE
- ADA PATHWAY
- BIKE PATH
- BIKE PATH UNDER PLAZA
- PEDESTRIAN
- PRIMARY VEHICULAR
- SECONDARY VEHICULAR
- TERTIARY VEHICULAR

- PROGRAM CATEGORIES
- EDUCATIONAL
  - MIX USE DEVELOPMENT
  - RESIDENTIAL LIVING
  - COMMUNITY SERVICE OUTREACH
  - CIVIC USE & OPEN SPACE



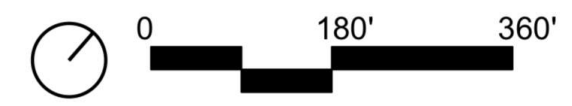
Simone Drucker  
 Rachael Dwork  
 Vicki Rand  
 Mary Diane Rasmussen  
 Janet Teller  
 Cynthia Tribull  
 Theo Vuduris  
 hia Tribull



LEGEND

- 1. THE SOURCE WATER FEATURE
- 2. 2ND AND OLIVE PARK: 12GO NORTH
- 3. ROOFTOP PARK SHELTER SERVICES SHOPS AND MARKET :12GO SOUTH
- 4. PEDESTRIAN BRIDGE
- 5. PEDESTRIAN CORRIDOR
- 6. GREENWAY: GREENBELT, BICYCLE PATH NETWORK & CANOPY
- 7. ANGEL'S KNOLL PARK

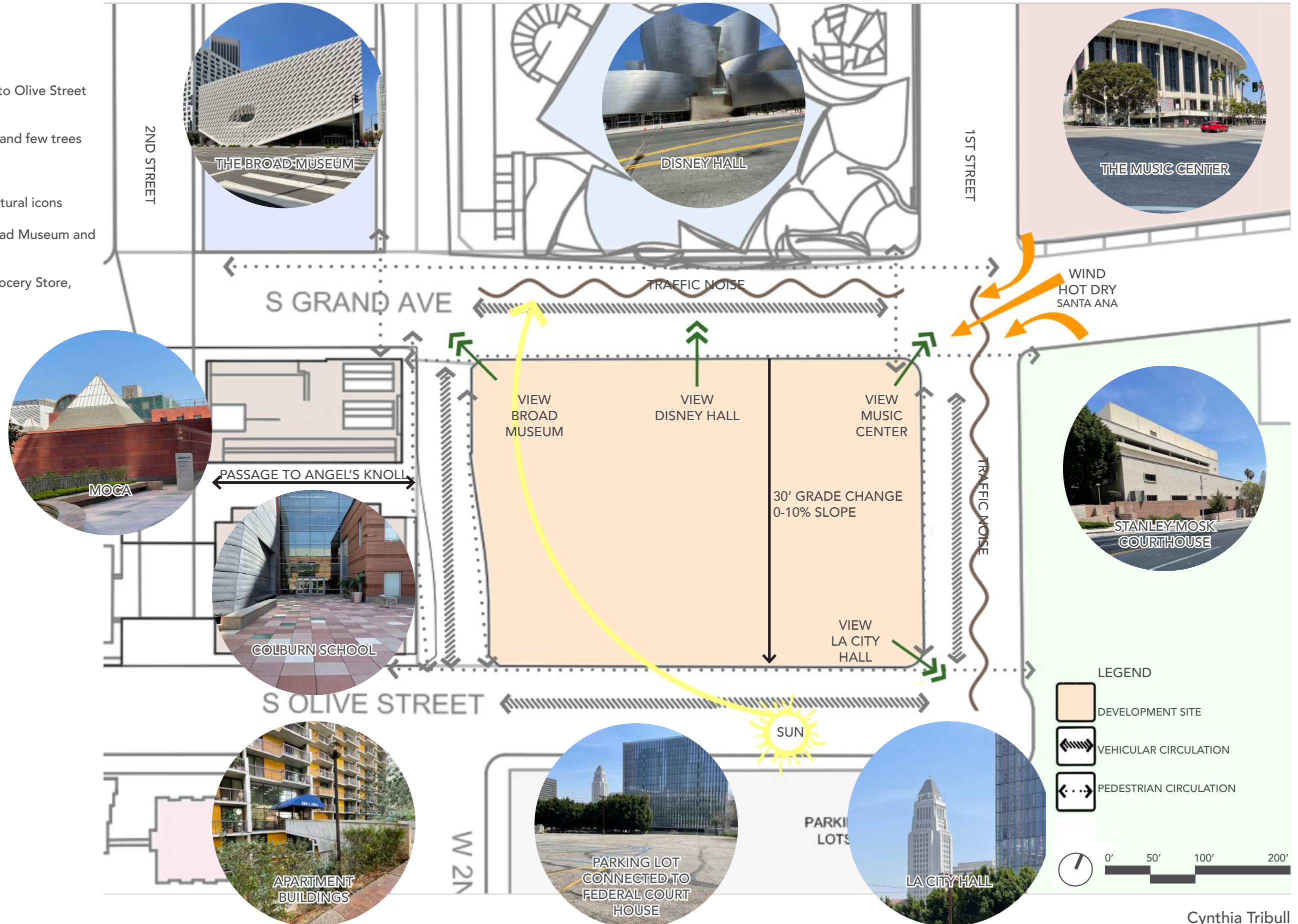
\* NAME OF PARK - 12GO NORTH/SOUTH CREATED BY VICKY RAND AND STANDS FOR THE FOUR CROSS STREETS OF THE PARK (1ST STREET, 2ND STREET, GRAND AVE AND OLIVE STREET)



# SITE ANALYSIS: Individual Design

## KEY COMPONENTS OF DEVELOPMENT SITE

- ACREAGE - 3.2 acres
- TOPOGRAPHY - Site slopes to the South East  
30' change in elevation from Grand Ave to Olive Street  
Overall slope is 0-10%
- SHADE - Minimal due to sun exposure and few trees
- NOISE - Traffic and city sounds
- LOCATION - Site surrounded by LA cultural icons
- VIEWS - Disney Hall, Music Center, Broad Museum and LA City Hall Tower
- DEVELOPMENT OPPORTUNITIES - Grocery Store, housing for homeless, and parking



THE HUDSON YARDS PUBLIC SQUARE AND GARDENS: Location: Manhattan, New York



The Vessel and Plaza area  
Source: Google Maps



A view of the Gardens SOURCE: <https://worldlandscapearchitect.com/the-hudson-yards-public-square-and-gardens-envisioned-as-a-contemporary-plaza/#.YInMRC-cZBw>



NOTES:

Designer:  
Thomas Heatherwick

Year Built: 2019

Precedents:

- long comfortable benches
- Wide open area, used for exercise classes, farmers market, movie nights
- Exquisite materials used of the highest quality
- Site is located near many cultural centers, The Shed, Javitz Center
- The Vessel is an incredible focal Point

Negative Precedents:

- Visitors not protected from wind.
- 3 people have committed suicide, structure is currently closed



Movie Night at The Vessel



A picture of The Bench SOURCE: <https://worldlandscapearchitect.com/the-hudson-yards-public-square-and-gardens-envisioned-as-a-contemporary-plaza/#.YInMRC-cZBw>



Cynthia Tribull



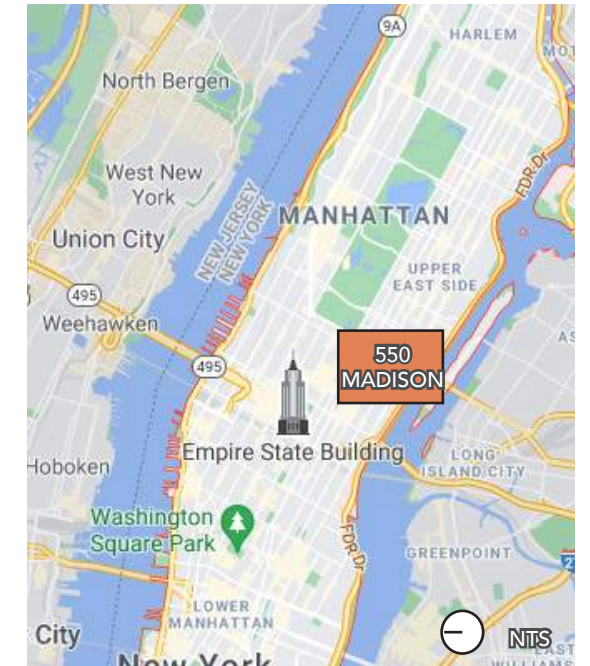
550 MADISON: Manhattan, New York



Series of interconnecting circles  
SOURCE: <https://worldlandscapearchitect.com/550-madison-garden-moves-forward-with-approval-from-nyc/#.YInDIS-cZBw>



Site Plan SOURCE: <https://worldlandscapearchitect.com/550-madison-garden-moves-forward-with-approval-from-nyc/#.YInDIS-cZBw>



NOTES:

Designer: Snohetta

Year Built: 2022

Precedents:

- reconnects the building into the street life of East Midtown
- offers an immersive, verdant respite in the city
- interconnected outdoor 'rooms' that provide both quiet spaces and larger, more open areas
- Partially covered by a new glass canopy and formed by a series of intersecting circles in plan



Digital section rendering  
SOURCE: <https://worldlandscapearchitect.com/550-madison-garden-moves-forward-with-approval-from-nyc/#.YInDIS-cZBw>



Cynthia Tribull



Thammasat University  
SOURCE: <https://worldlandscapearchitect.com/thammasat-university-the-largest-urban-rooftop-farm-in-asia/#.YInO5S-cZBw>



Water circulation on Structure SOURCE: <https://worldlandscapearchitect.com/thammasat-university-the-largest-urban-rooftop-farm-in-asia/#.YInO5S-cZBw>



SOURCE: <https://worldlandscapearchitect.com/thammasat-university-the-largest-urban-rooftop-farm-in-asia/#.YInO5S-cZBw>



TURF rewards those who climb to the top with a 360-degree panoramic view of the university centered in the urban farm with open sky. SOURCE: Panoramic Studio / LANDPROCESS via V2COM



NOTES:

Designer:  
Kotchakorn Voraakhom

Year Built: 2019

Precedents:

- Integrates landscape architecture with the ingenuity of traditional rice terraces
- Maximizes the terrain to create multi-functional public spaces
- The roof is equipped with solar panels which can produce up to 500,000 watts per hour to irrigate the urban farm from the retaining ponds and power the building beneath it



Cynthia Tribull

WATER FEATURES: Location: Aspen, London, Philadelphia and Los Angeles



Plaza in the middle of Aspen



Princess Diana Memorial Fountain  
SOURCE: <https://www.pinterest.com/pin/373095150361365728/>



Philadelphia's Splash Park  
SOURCE: <https://6abc.com/splash-park-water-safety-organisms-in-suburban-testing-labs-city-pools/4041916/>



Albion Riverside Park, Los Angeles Bioswale Area done by City of Los Angeles Architects  
SOURCE: <https://www.lamag.com/culturefiles/albion-riverside-park/>



Cynthia Tribull

## Notes:

### DISNEY HALL

- Clipper Ship
- Concave Shape
- Beautiful to look at

### DEVELOPMENT SITE

- Water
- Convex
- Curvilinear
- Like Rain
- Like Puddles
- Amorphic

### IDEAS:

- Event Space
- Restaurants, eateries
- Benches, Dining Area
- Parking
- Urban Farming
- Outdoor Classroom
- Gardening
- Shade Trees
- Services Unhoused Community
- Mixed Use Shelter Facility
- Daycare
- Urban eatery/Grocery



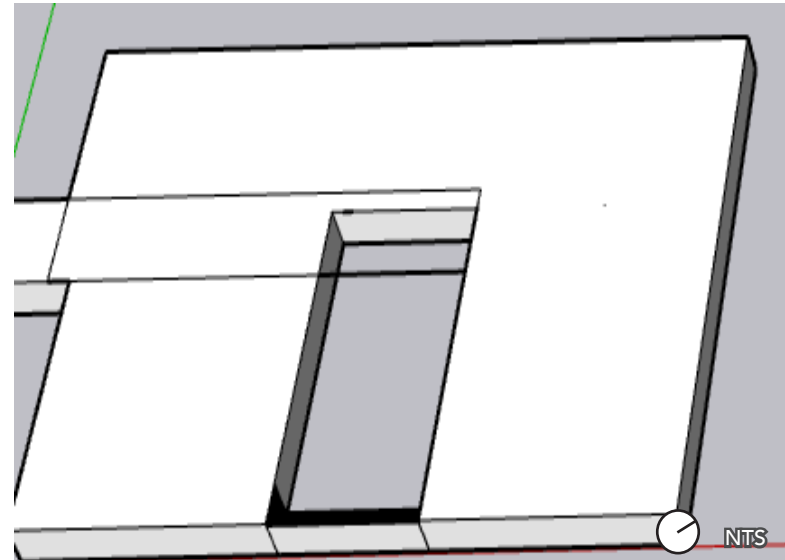
Sketch - LD3 B



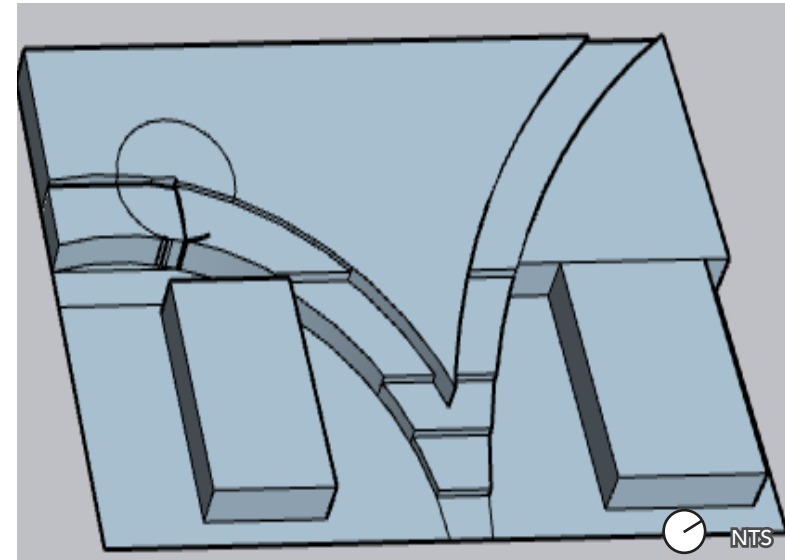
Sketch - LD3 C



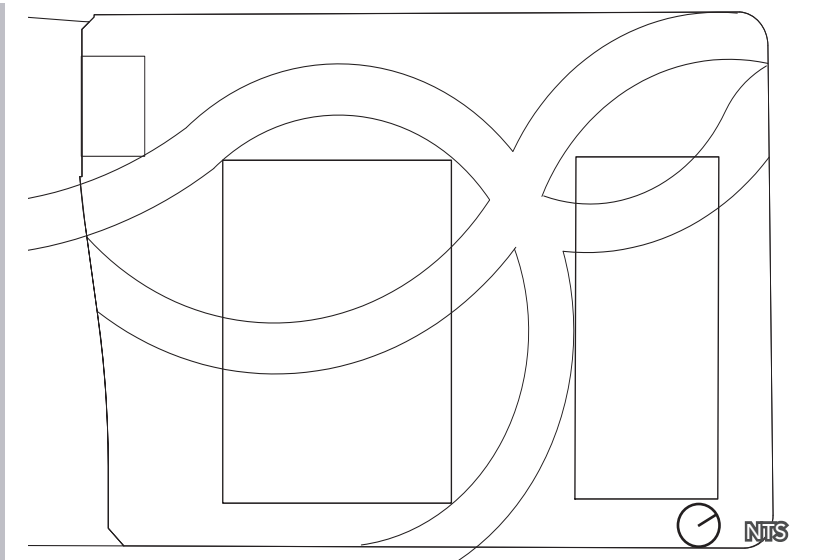
Sketch - LD3 D



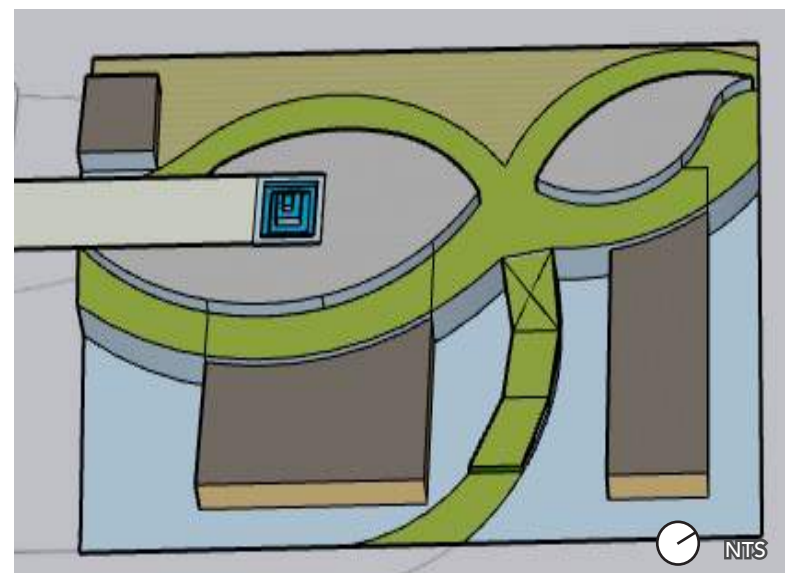
Sketch - open entrance from Olive



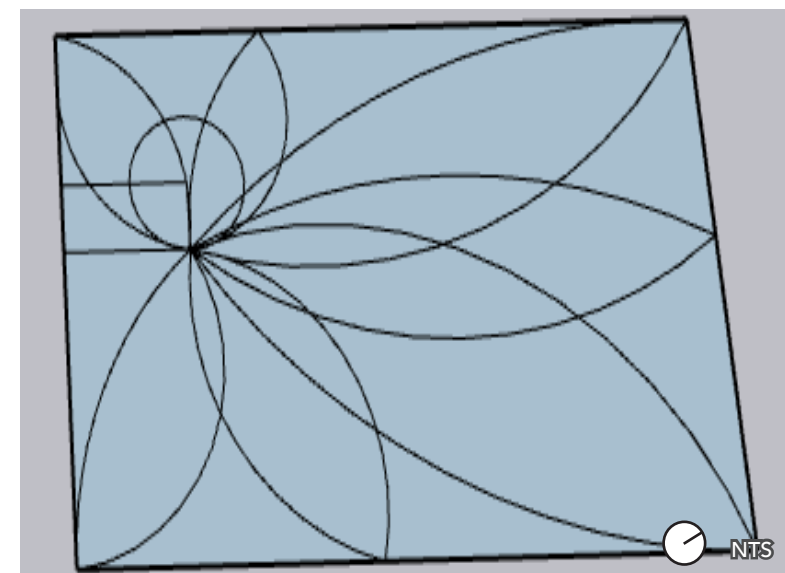
Sketch - V shape



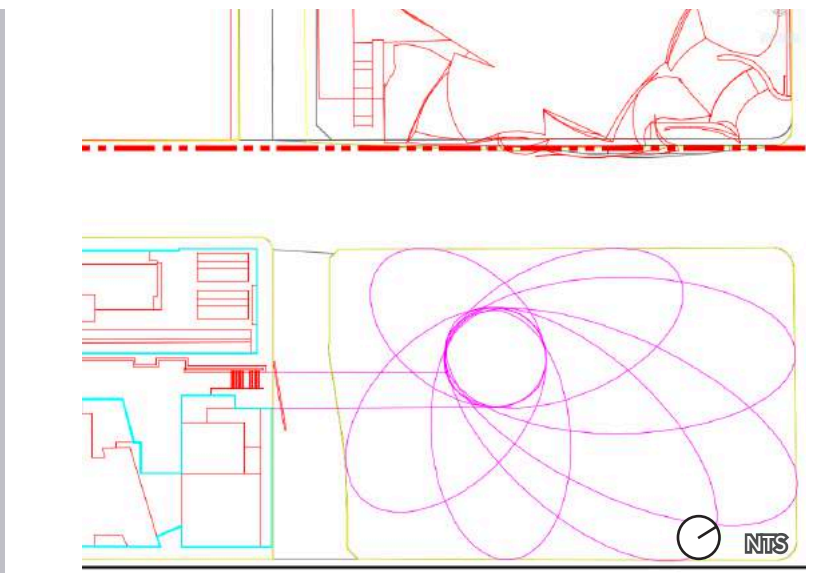
Sketch - Bow shape



Sketch - Bow shape



Sketch - Flower shape

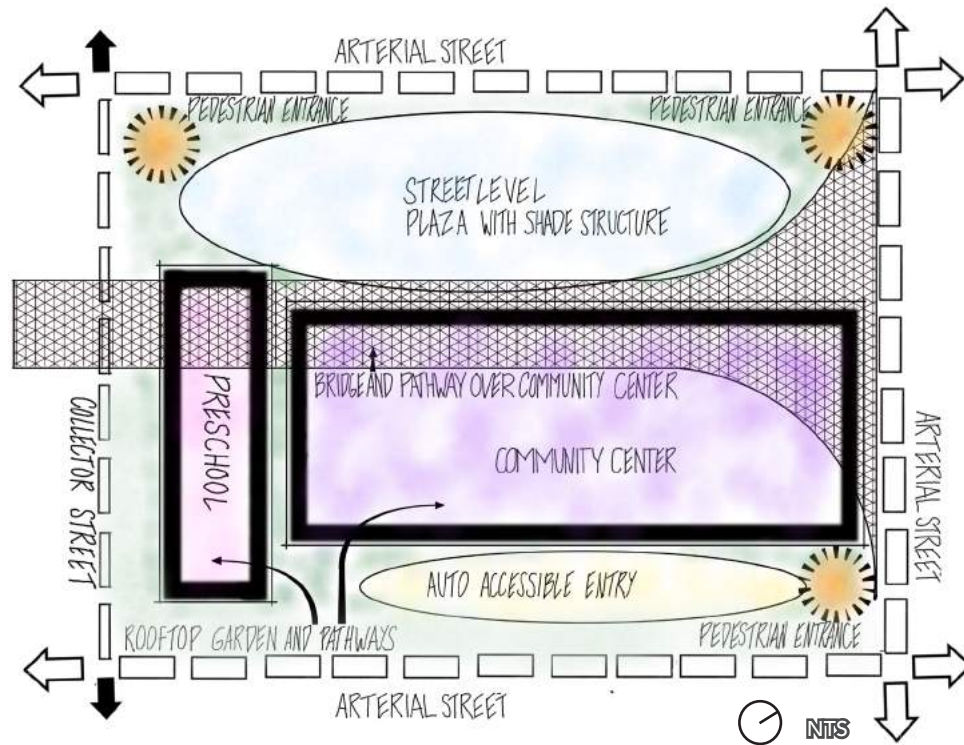


Sketch - connected ovals

12GO NORTH

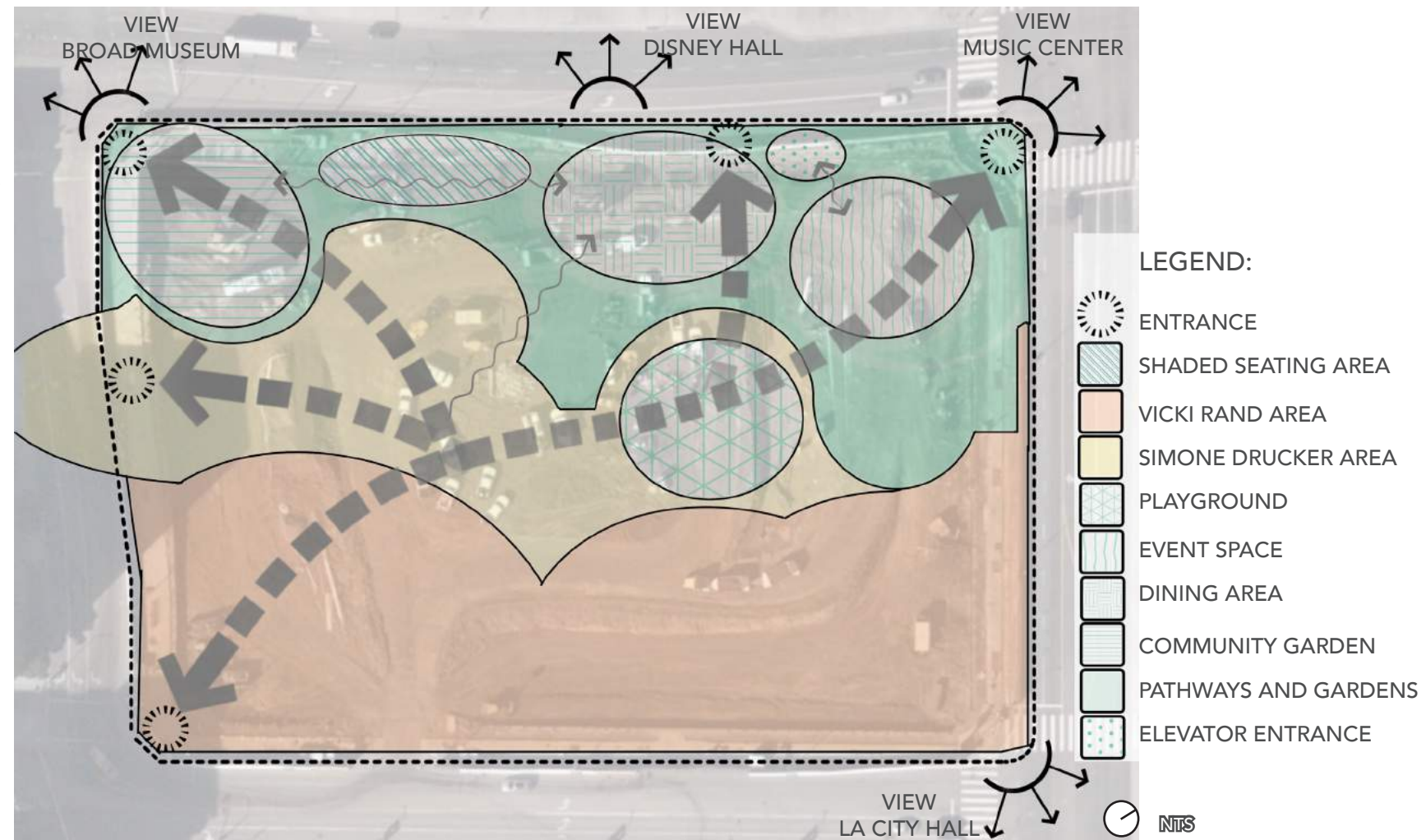


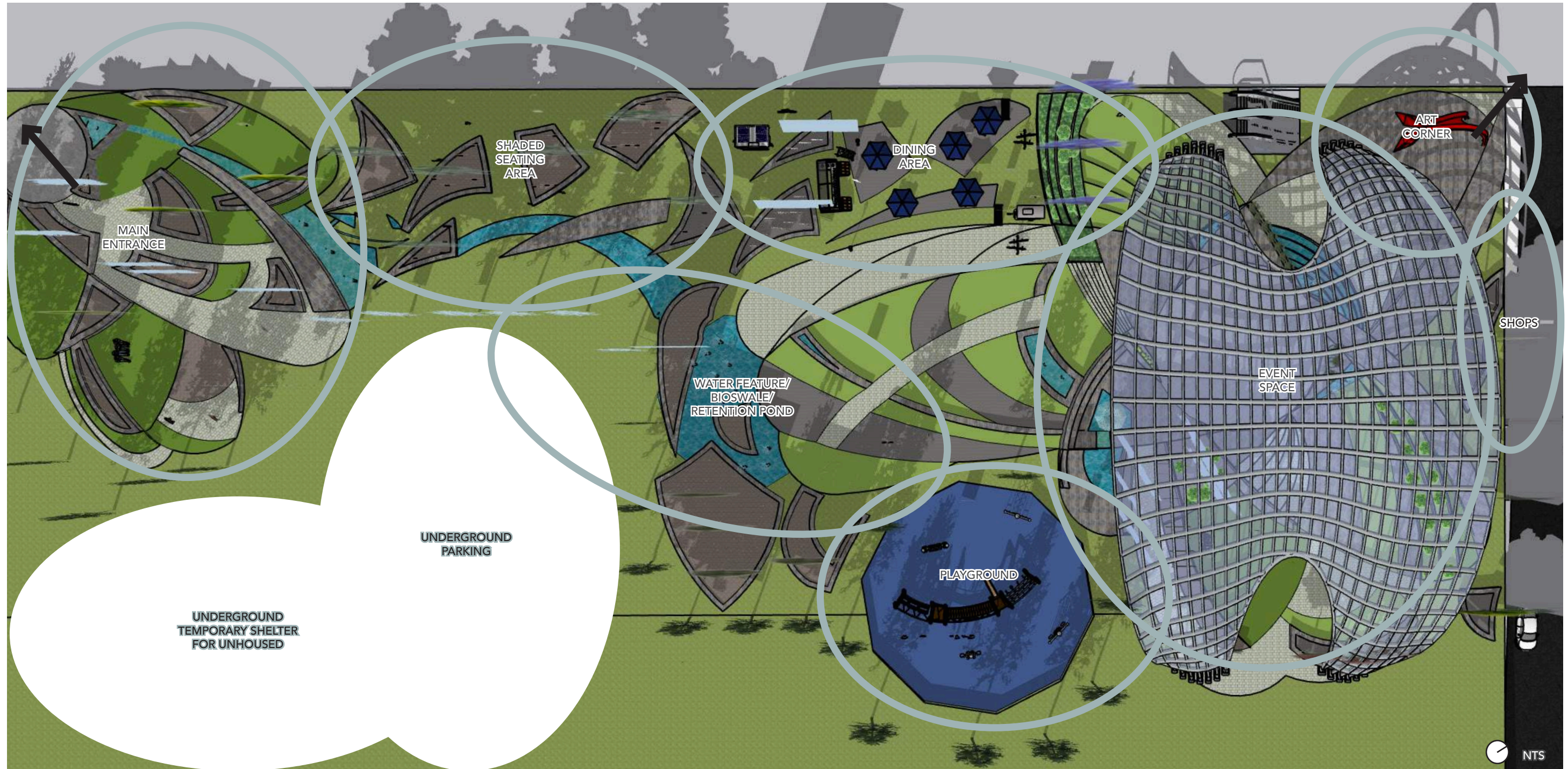
Note:  
First two preliminary Schematic Design sketches not used for the final design.



**BIG IDEA**

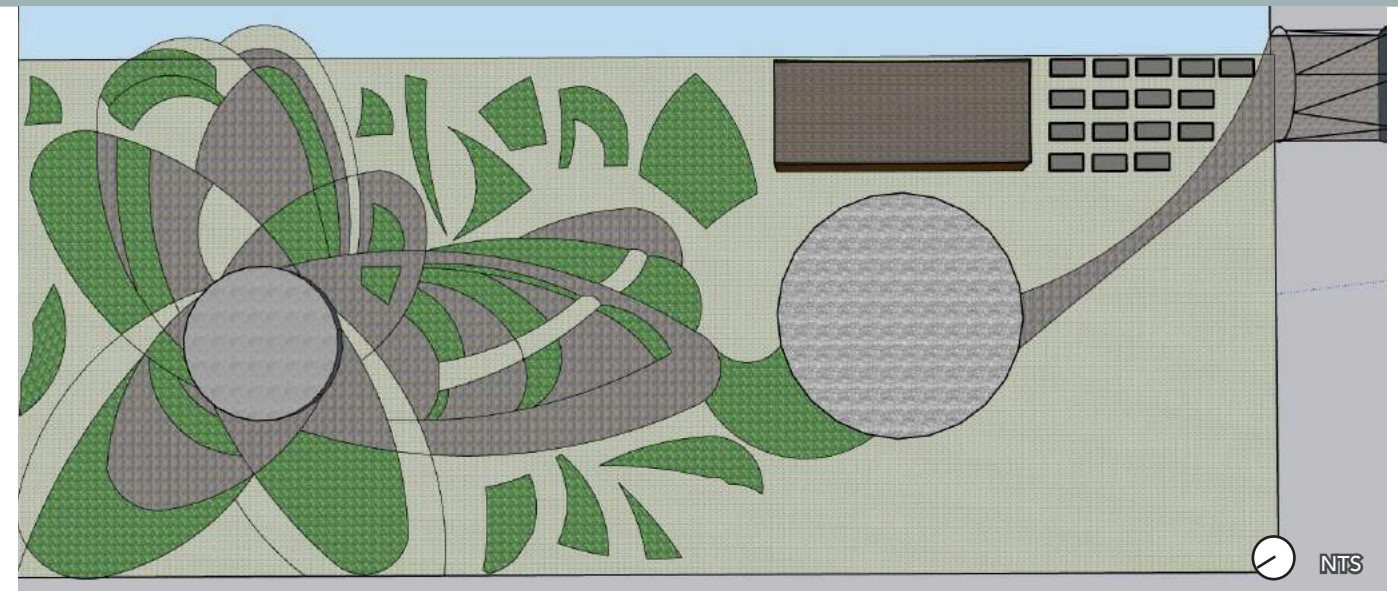
- Interconnected outdoor 'rooms' that provide both quiet spaces and larger, more open areas



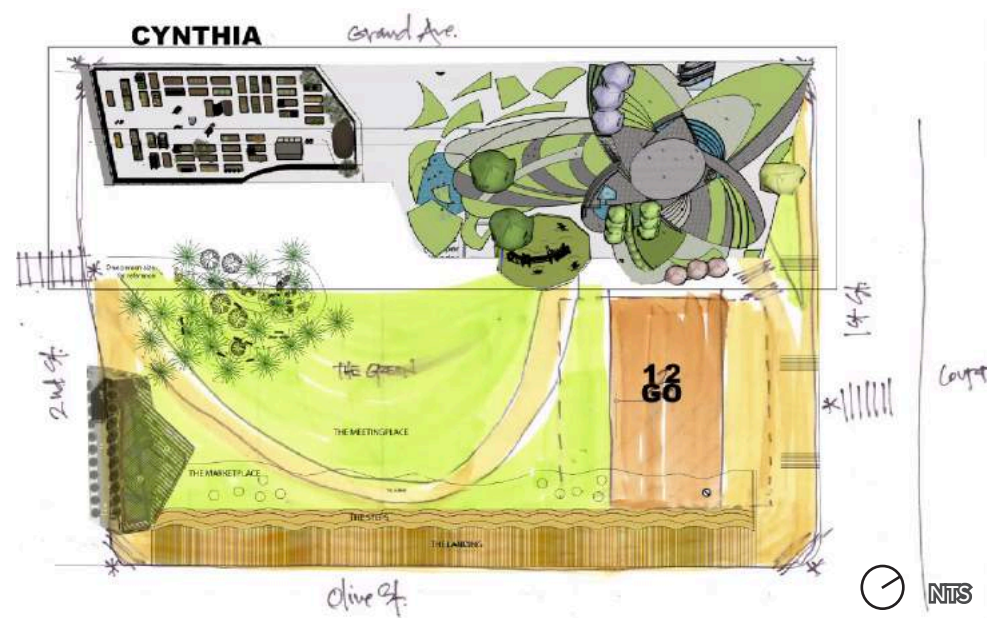




Sketch - connected ovals with restaurants



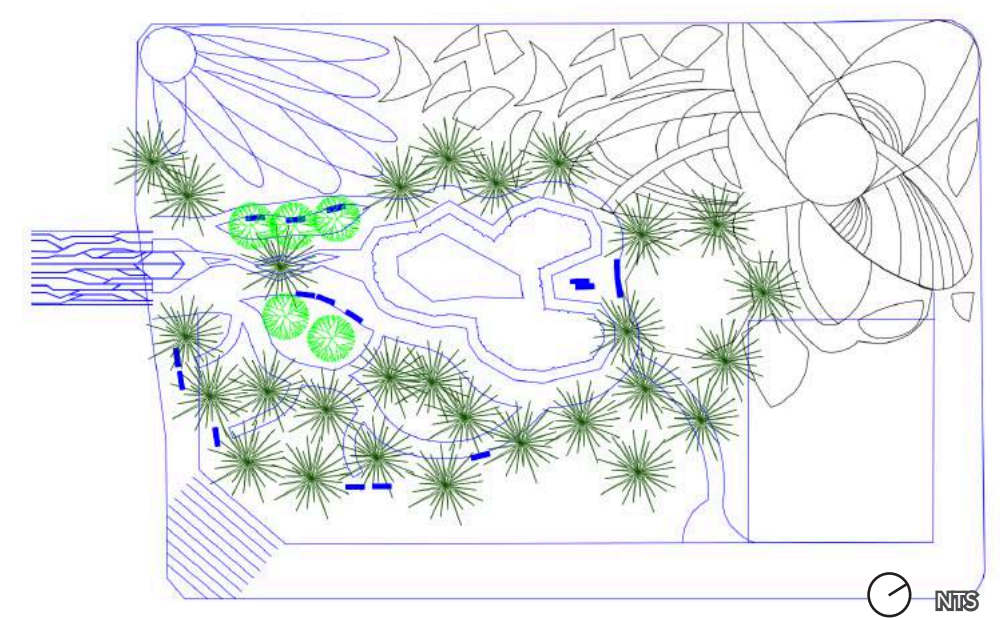
Sketch - connected ovals, restaurant, and community garden



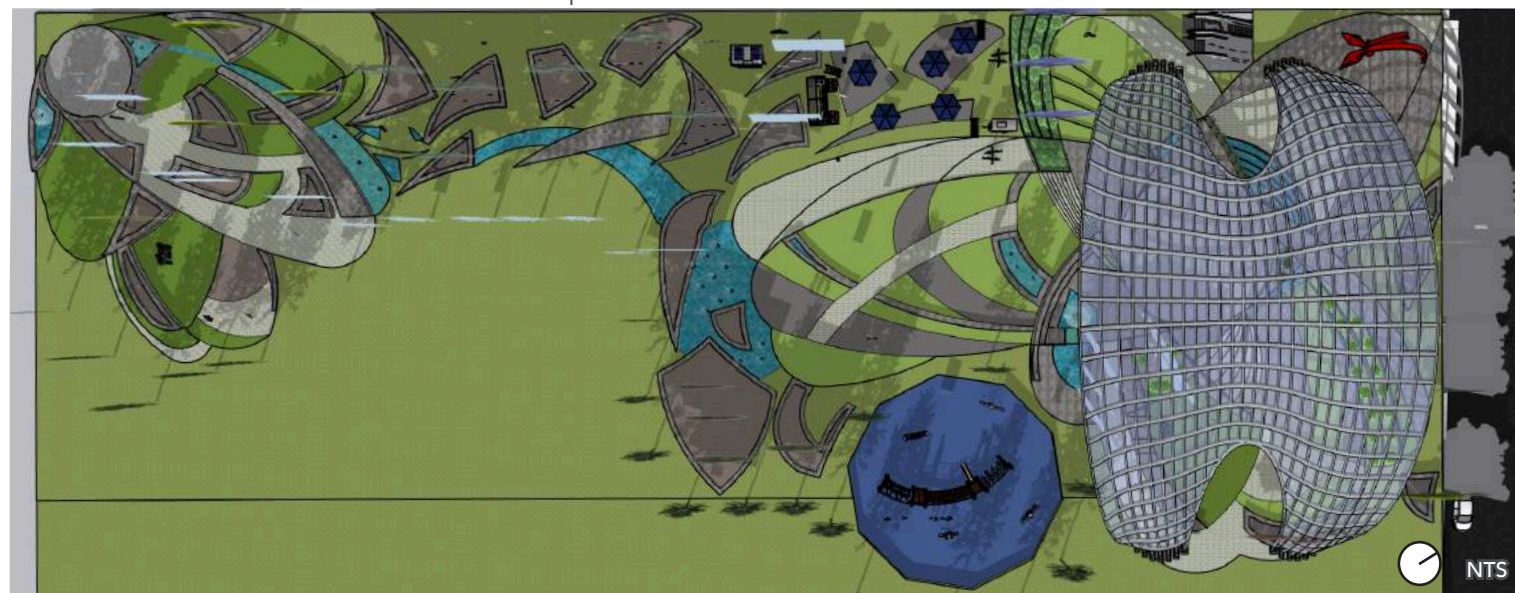
Sketch - connected ovals and community garden



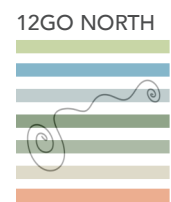
Sketch - connected ovals and path

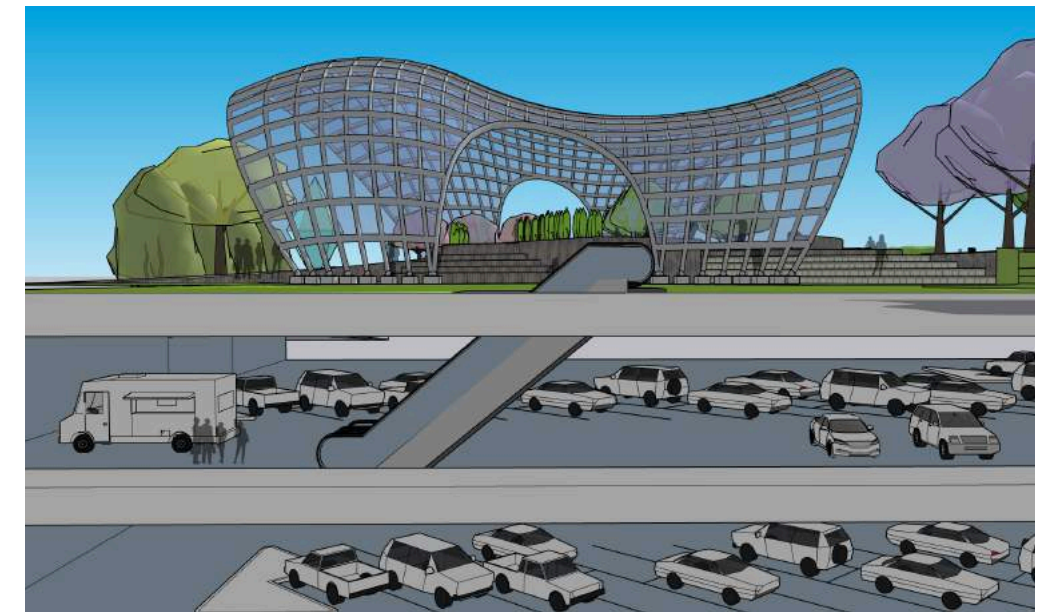
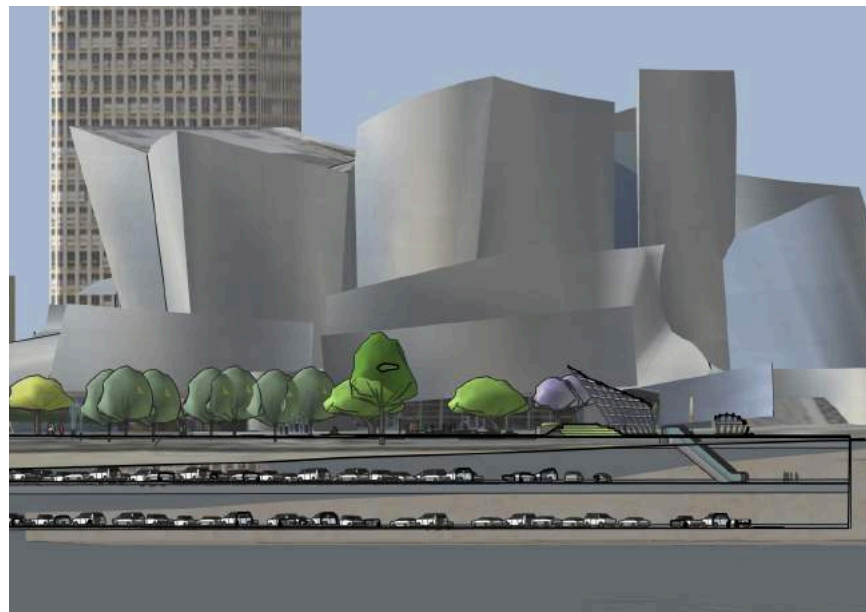
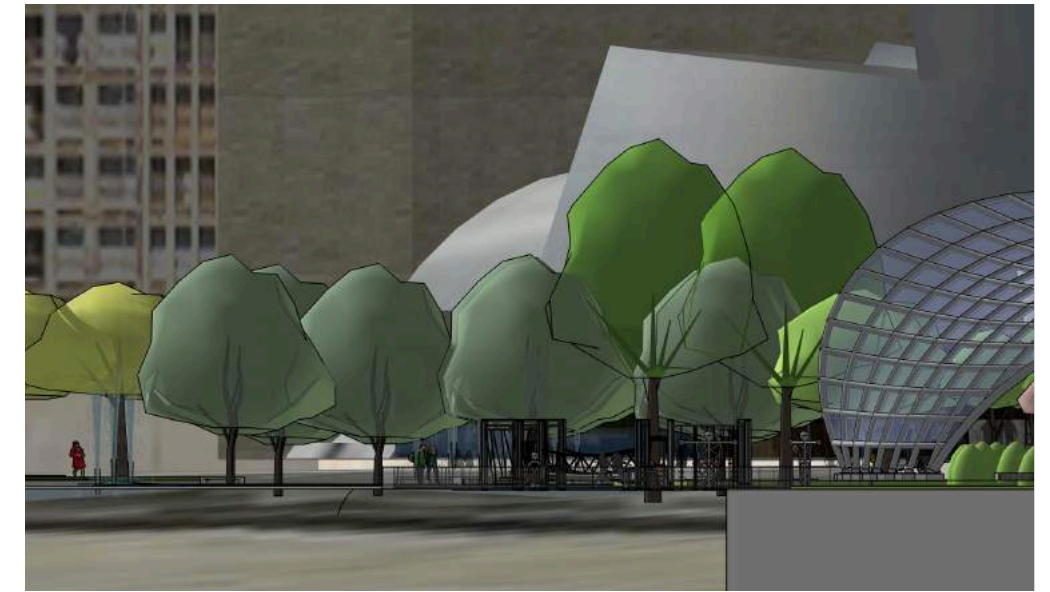
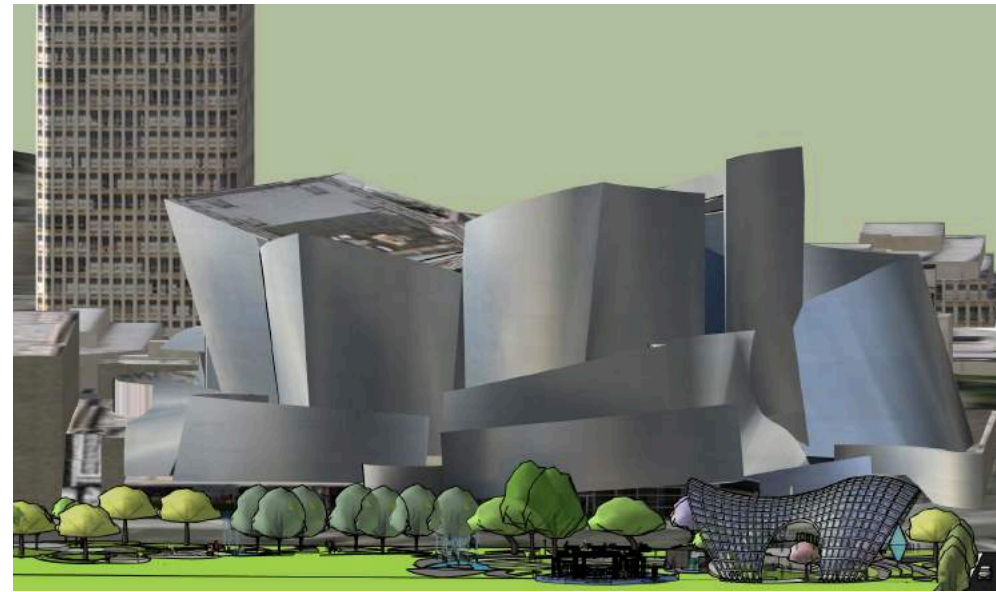
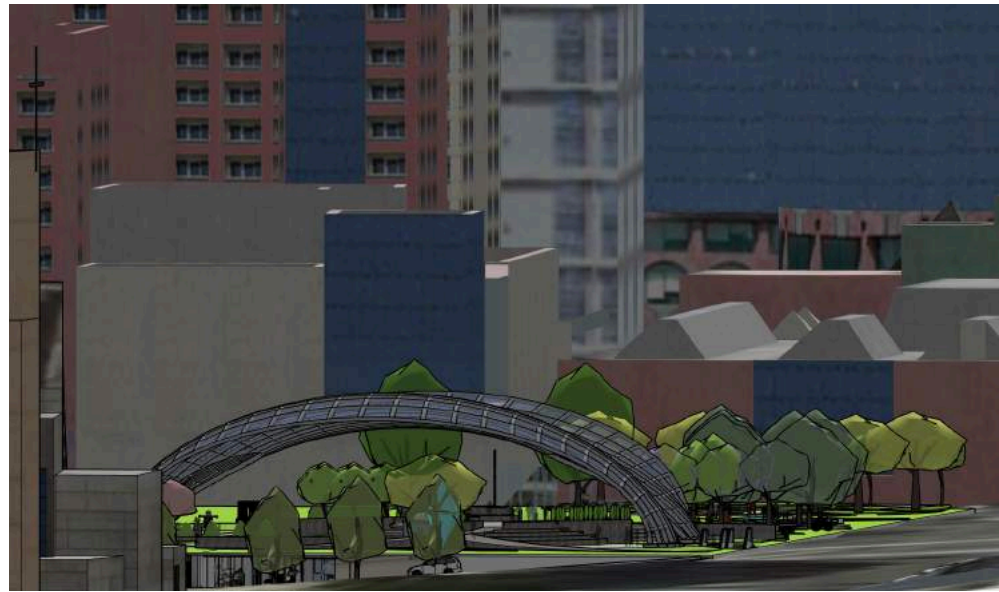


Sketch - connected ovals and flower shape

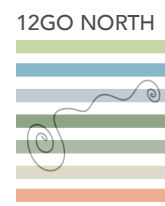
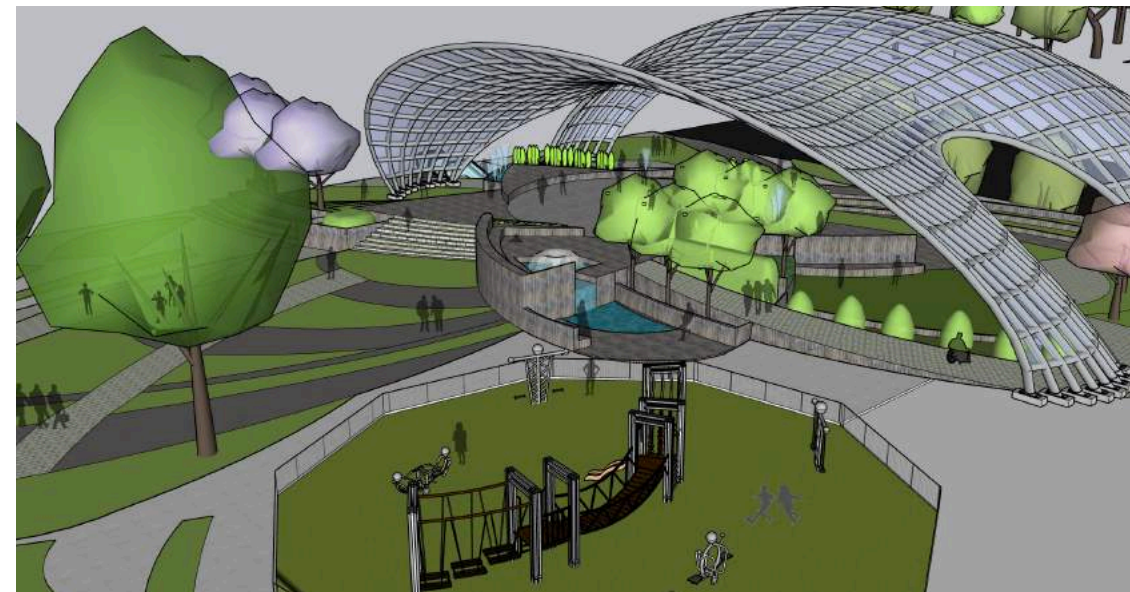


Final Sketch - connected ovals and flower shape





NOTES: IMAGES ARE TOO DARK AND NEED PEOPLE ENGAGED IN ACTIVITY THAT SPACES ARE INTENDED FOR





DESIGN NARRATIVE:

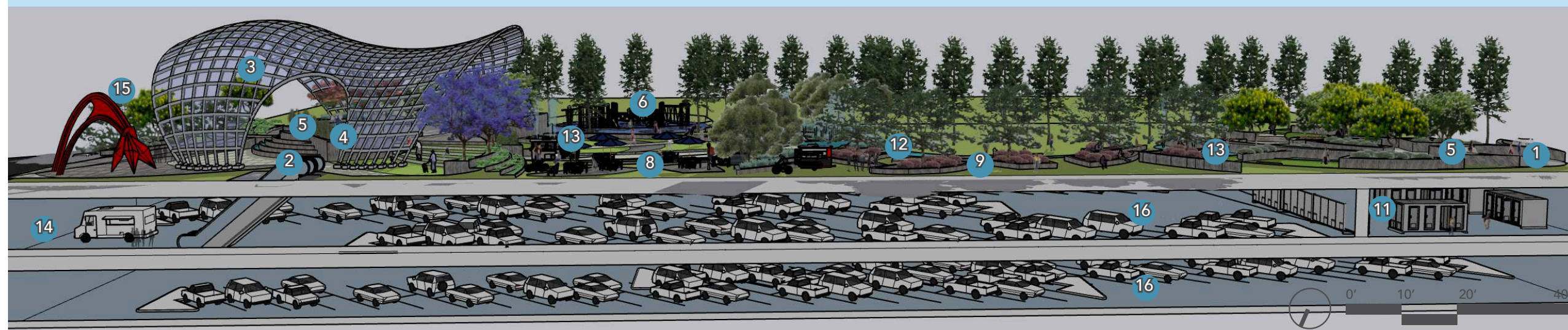
- A water themed public park that is worthy of the surrounding iconic buildings.
- Convex, curvilinear shapes will contrast with the concave shapes associated with Disney Hall.
- The idea is for this park to be the water for the Clipper Ship.
- Offers a respite in the city
- interconnected outdoor 'rooms' that provide both quiet spaces and larger, more open areas
- Shade structure to allow activity in all types of weather
- Low water plants, bioswales, retention ponds and permeable paving to reduce water waste



SITE LANDSCAPE PLAN LEGEND:

- A. THE SOURCE WATER FEATURE
  - B. ROOFTOP PARK SHELTER SERVICES SHOPS AND MARKET - 12GO SOUTH
  - C. PEDESTRIAN BRIDGE
  - D. GREENWAY: GREENBELT, BICYCLE PATH NETWORK AND STREET CANOPY
  - E. 2ND AND OLIVE PARK - 12GO NORTH
1. MAIN ENTRANCE
  2. ESCALATOR
  3. SHADE STRUCTURE
  4. EVENT SPACE
  5. WATER FEATURE
  6. PLAYGROUND
  7. SHOPS
  8. DINING AREA/ FOOD CARTS
  9. SHADED SEATING AREA
  10. PEDESTRIAN ENTRANCE TO PARKING
  11. UNDERGROUND TEMPORARY SHELTER STATIONS
  12. BIOSWALE
  13. STORM WATER RETENTION POND
  14. FOOD TRUCK
  15. LARGE ART SCULPTURE
  16. PARKING

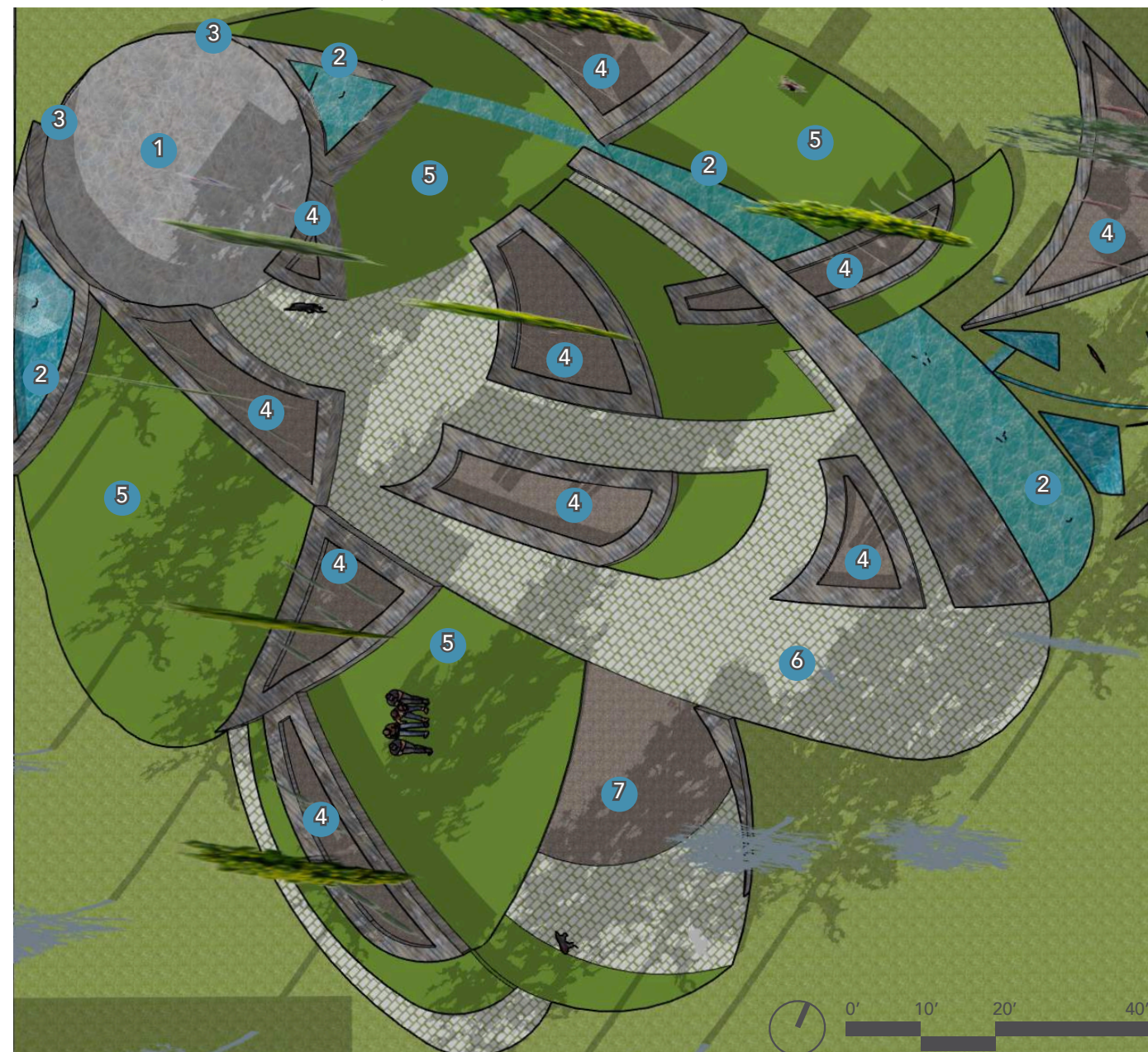
OVERALL SITE LANDSCAPE PLAN



12GO NORTH



1. MAIN ENTRANCE - NORTH/WEST CORNER ENLARGEMENT



- LEGEND
- 1. entrance circle
  - 2. water feature used to treat and infiltrate urban stormwater runoff
  - 3. signage
  - 4. reclaimed teak planting bed
  - 5. picnic lawn - kurapia
  - 6. permeable grass pavers
  - 7. aqualine permeable pavers, color hatteras



A. MAIN ENTRANCE VIEW TO THE SOUTH EAST



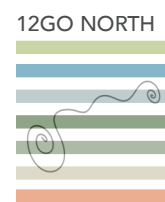
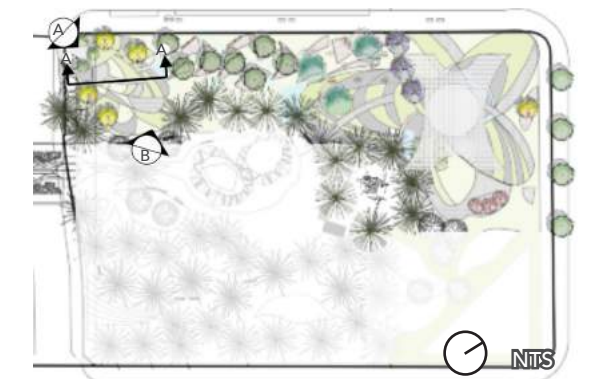
B. MAIN ENTRANCE VIEW TO THE NORTH WEST

**BIG IDEA:**  
Create an entrance with an element of surprise that leads to interconnected outdoor rooms that provide both quiet spaces and larger more open areas.

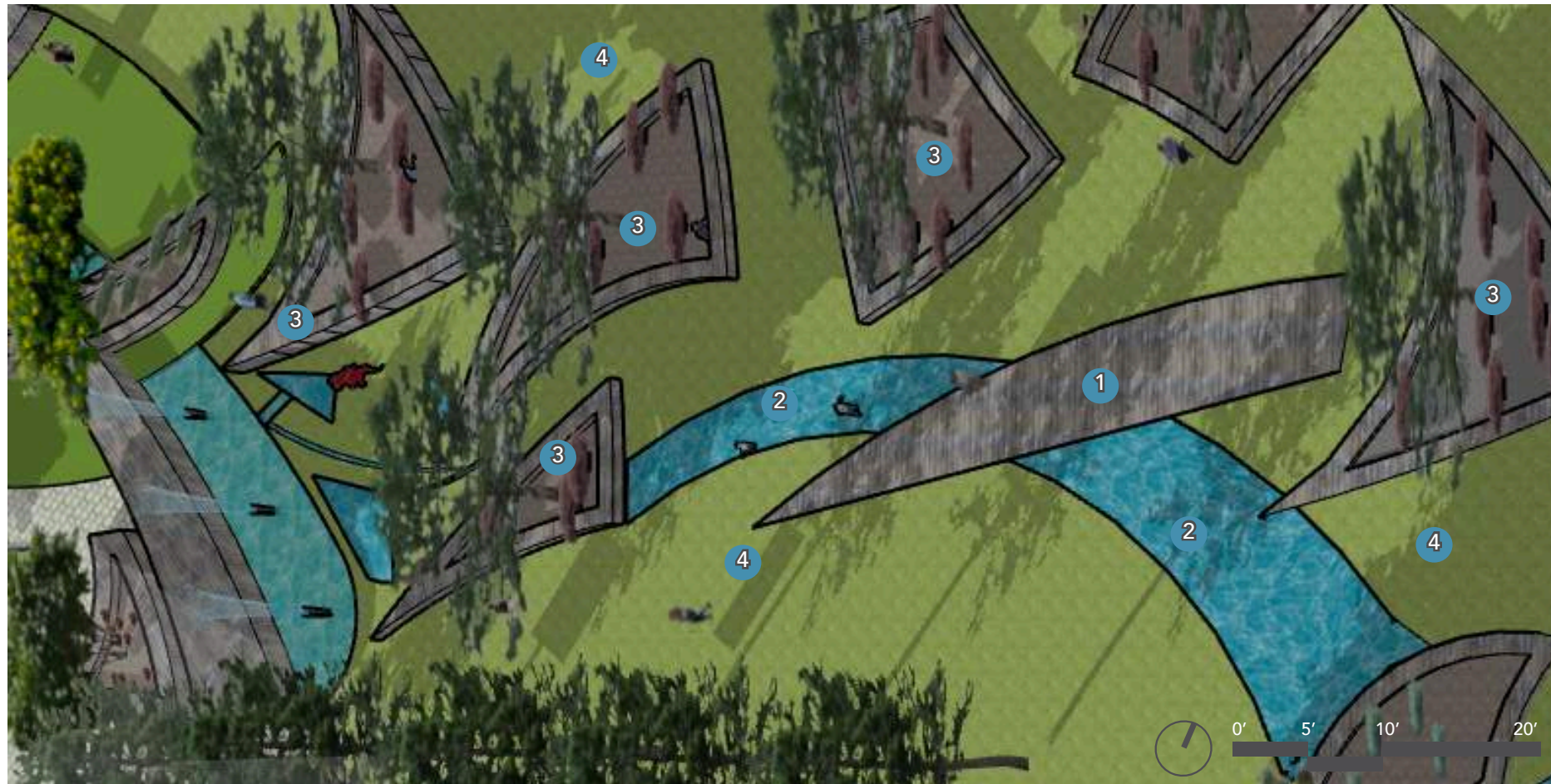
ILLUSTRATIVE SECTION A-A OF MAIN ENTRANCE



KEY MAP



2. SHADED SEATING AREA AND BIOSWALE- NORTH/WEST CENTER ENLARGEMENT



LEGEND

1. ADA path over water feature

2. Bioswale used to capture and filter stormwater runoff from impervious surfaces.

3. Reclaimed teak planting bed with plantanus x acerifolia, london plane tree an lropetalum chinense, chinese fringe flower. both plants will need low water once established.

4. Lawn - Kurapia

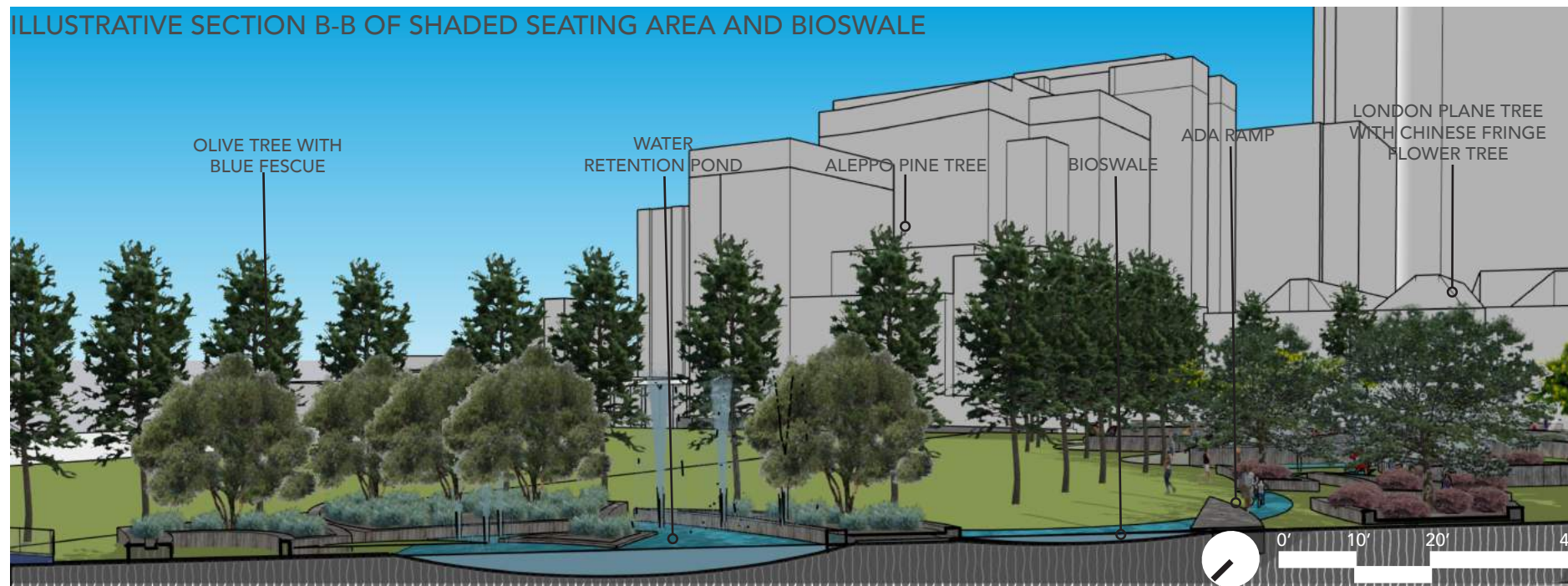


C. SHADED SEATING AREA AND BIOSWALE VIEW TO THE NORTH



D. SHADED SEATING AREA VIEW TO THE SOUTH

ILLUSTRATIVE SECTION B-B OF SHADED SEATING AREA AND BIOSWALE

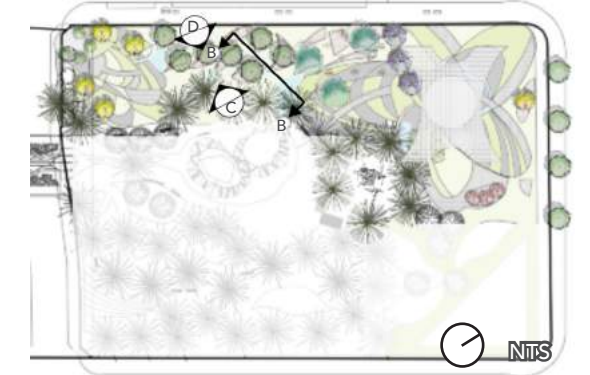


**BIG IDEAS:**  
 •Offer a respite from the City  
 •Low Impact Development (LID). Retention Pond and Bioswale will help retain stormwater.  
 •London Plane trees help create a symmetry between alleyway sycamore design of Theo Vuduris.

12GO NORTH

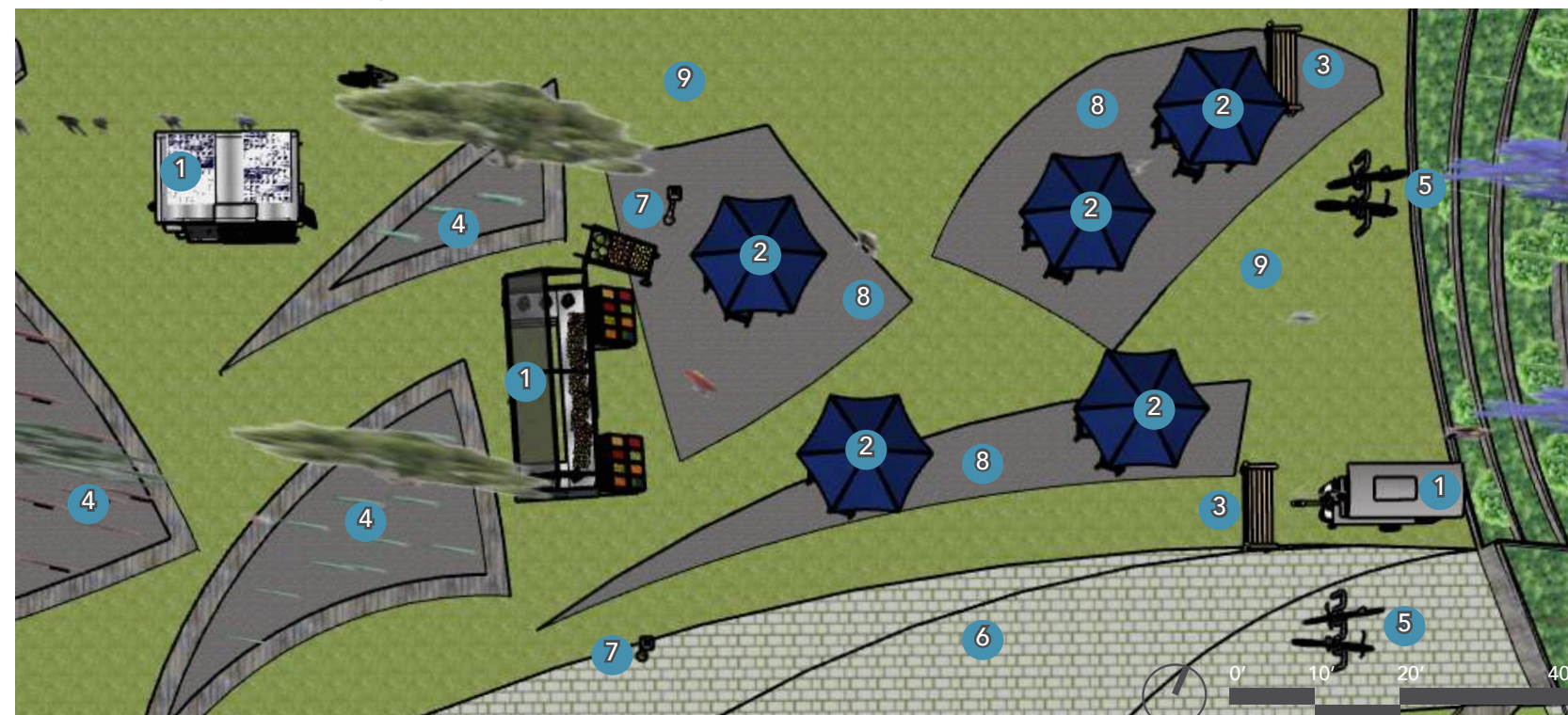


KEY MAP



Cynthia Tribull

3. DINING AREA - NORTH/WEST ENLARGEMENT



LEGEND

- 1. Food cart
- 2. Umbrella covered teak tables
- 3. Reclaimed teak bench
- 4. Reclaimed teak planting bed
- 5. Bike racks
- 6. Permeable grass pavers
- 7. Lamp post, Dorchester Outdoor Postmount
- 8. Decomposed granite surface
- 9. Kurapia lawn

**BIG IDEA:**  
Dining area to attract local residents, office workers and tourists from cultural centers to the park.



E. DINING AREA VIEW TO THE SOUTH



F. DINING AREA VIEW TO THE SOUTH EAST

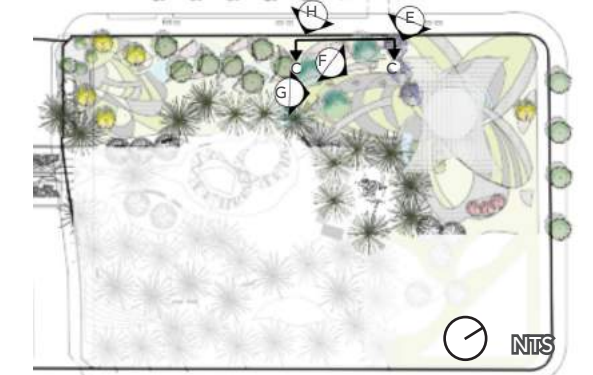


G. DINING AREA VIEW TO THE NORTH EAST



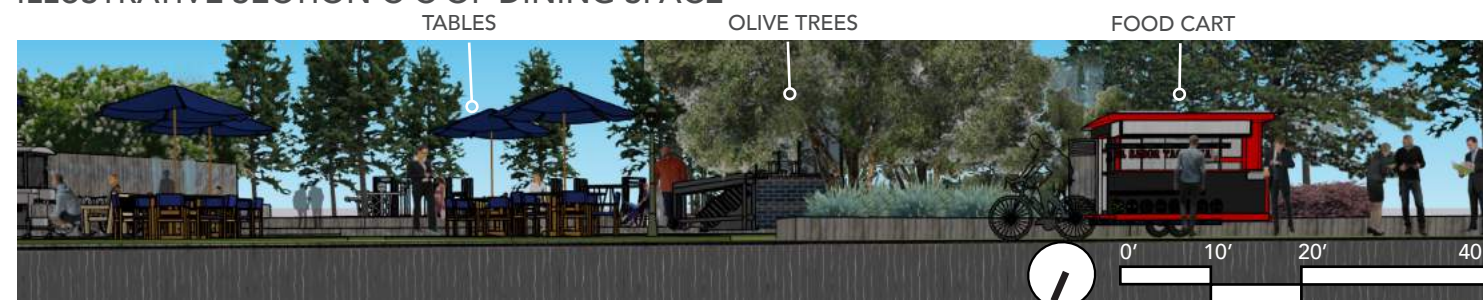
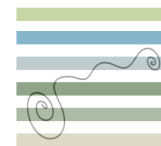
H. DINING AREA VIEW TO THE SOUTH

KEY MAP



ILLUSTRATIVE SECTION C-C OF DINING SPACE

12GO NORTH



ILLUSTRATIVE SECTION C-C OF DINING AREA

4. EVENT SPACE - NORTH/EAST CORNER ENLARGEMENT



LEGEND

1. Event stage
2. Water feature
3. Escalator
4. Space for large art sculpture
5. Picnic/dog walking lawn
6. Permeable grass pavers
7. ADA ramp
8. Reclaimed teak planting bed
9. Stairs
10. Handrothanus heptaphyllus, pink trumpet trees
11. Jacaranda mimosifolia trees planted with achillea millefolium, common yarrow
12. Shade/all weather overhead structure made from steel reinforced beams and borosilicate glass

BIG IDEA:

- A water themed covered event space that is worthy of the surrounding buildings and can be used in all types of weather.
- The art sculpture would need to be significant like the rendition of the Calder sculpture below, preferably by an iconic LA Artist.
- Concerts preformed by students from the Colburn School.
- exercise and educational classes taught



I. EVENT SPACE NORTH EAST CORNER, LARGE ART SCULPTURE SITE AND ESCALATOR TO PARKING GARAGE



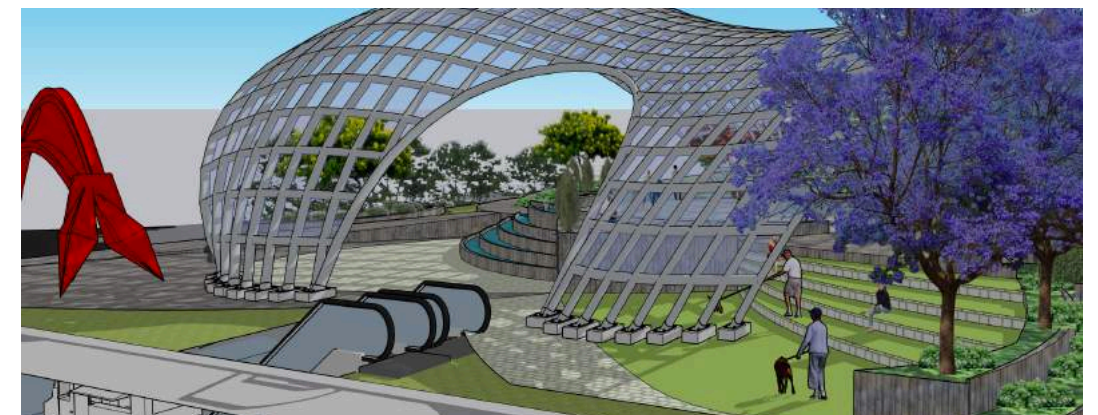
J. PINK TRUMPET TREES



K. NORTH EAST WATER FEATURE

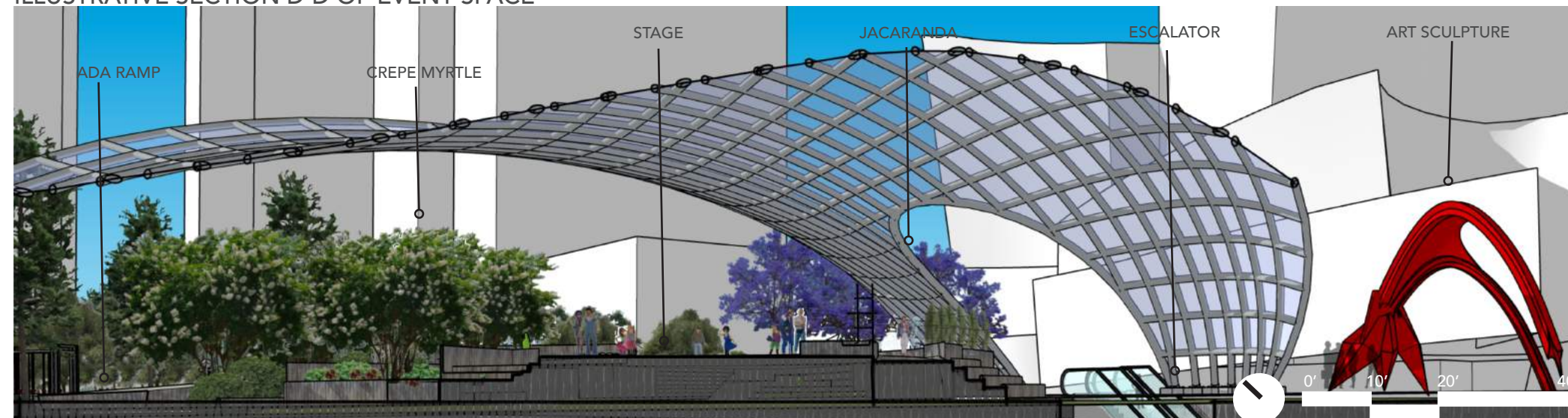


L. SOUTH EAST WATER FEATURE

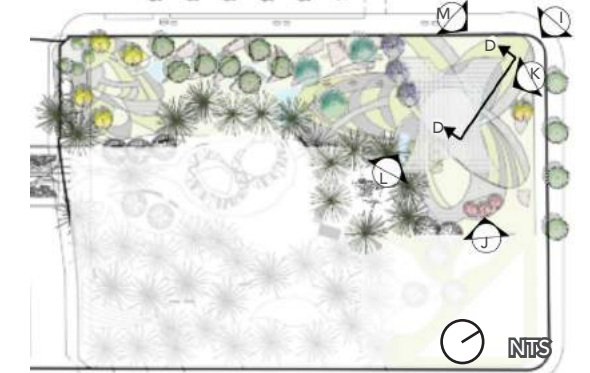


M. NORTH EAST PICNIC AND DOG WALKING LAWN

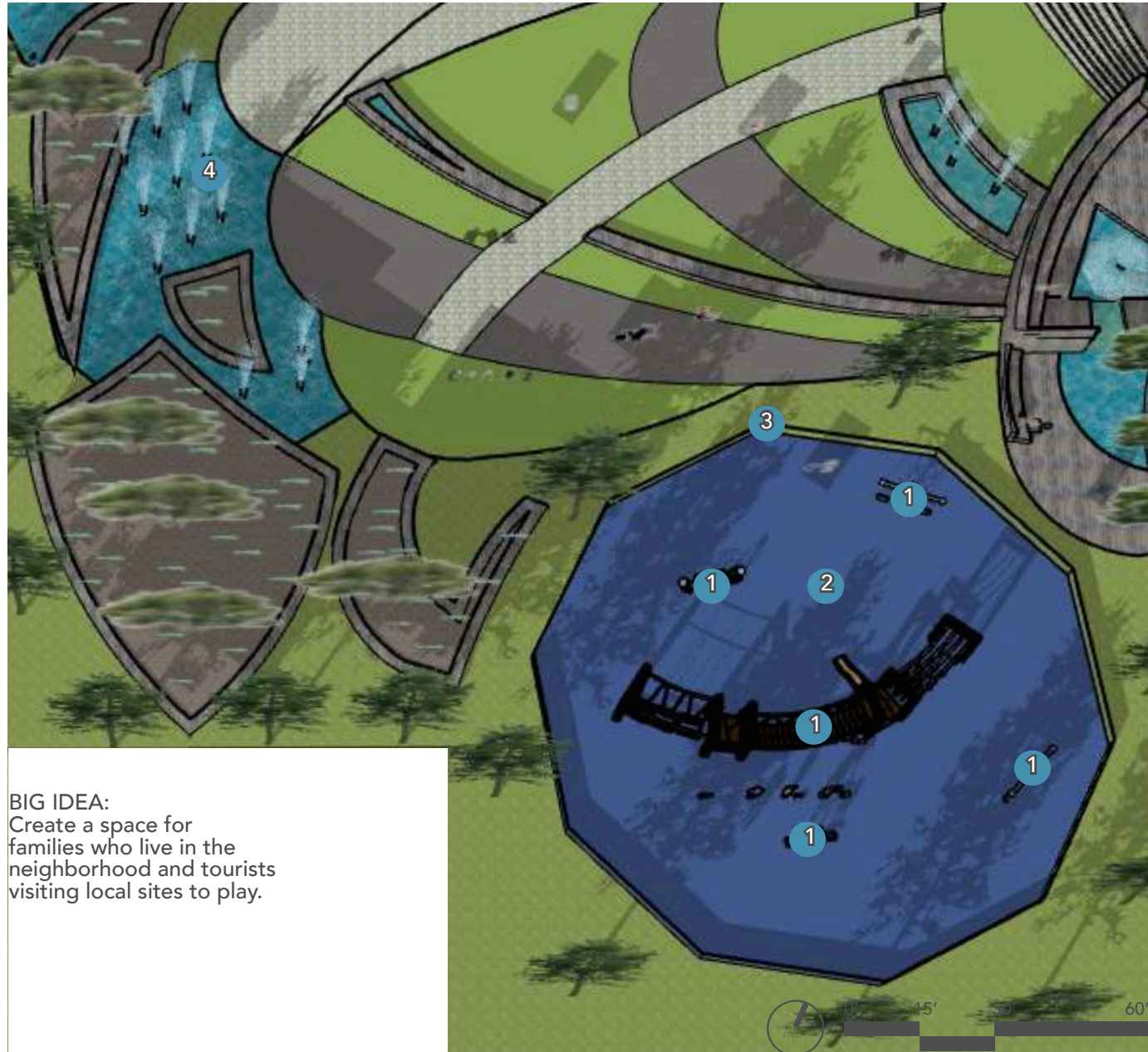
ILLUSTRATIVE SECTION D-D OF EVENT SPACE



KEY MAP



5. PLAYGROUND AND WATER FEATURE ENLARGEMENT



**BIG IDEA:**  
Create a space for families who live in the neighborhood and tourists visiting local sites to play.

- LEGEND**
- 1. All inclusive playground equipment for 5 -12 year old children
  - 2. New resilient rubber surfacing installation of pebbleflex 2.0, manufacturer: landscape structures
  - 3. Fence - Aegis II Xtreme 4'
  - 4. Water feature with retention pond and splash pad

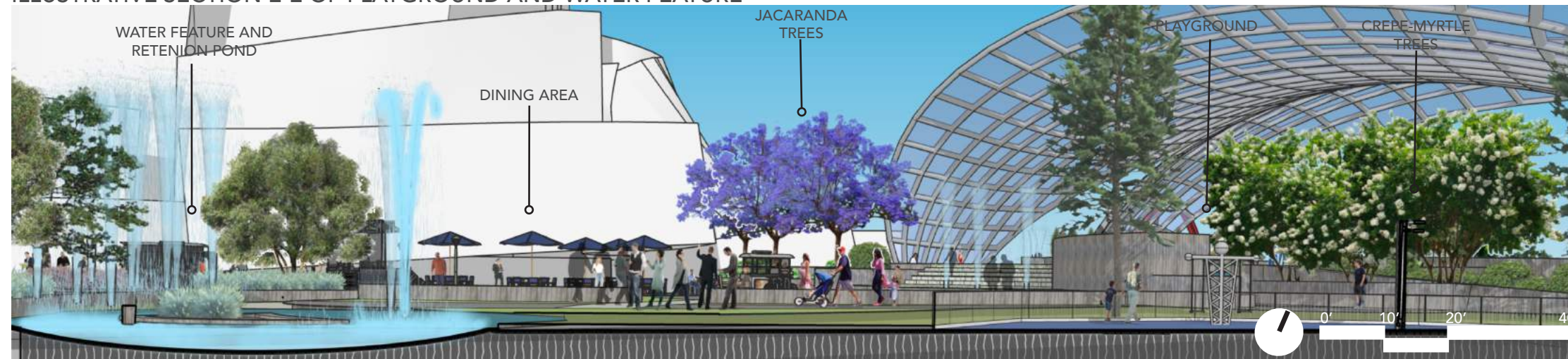


N. PLAYGROUND VIEW TO THE NORTH EAST

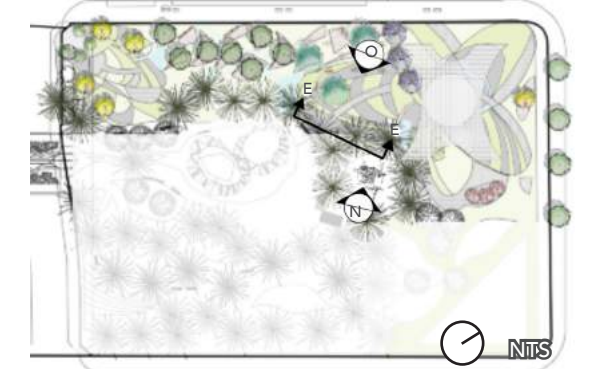


O. PLAYGROUND VIEW TO THE SOUTH WEST

ILLUSTRATIVE SECTION E-E OF PLAYGROUND AND WATER FEATURE



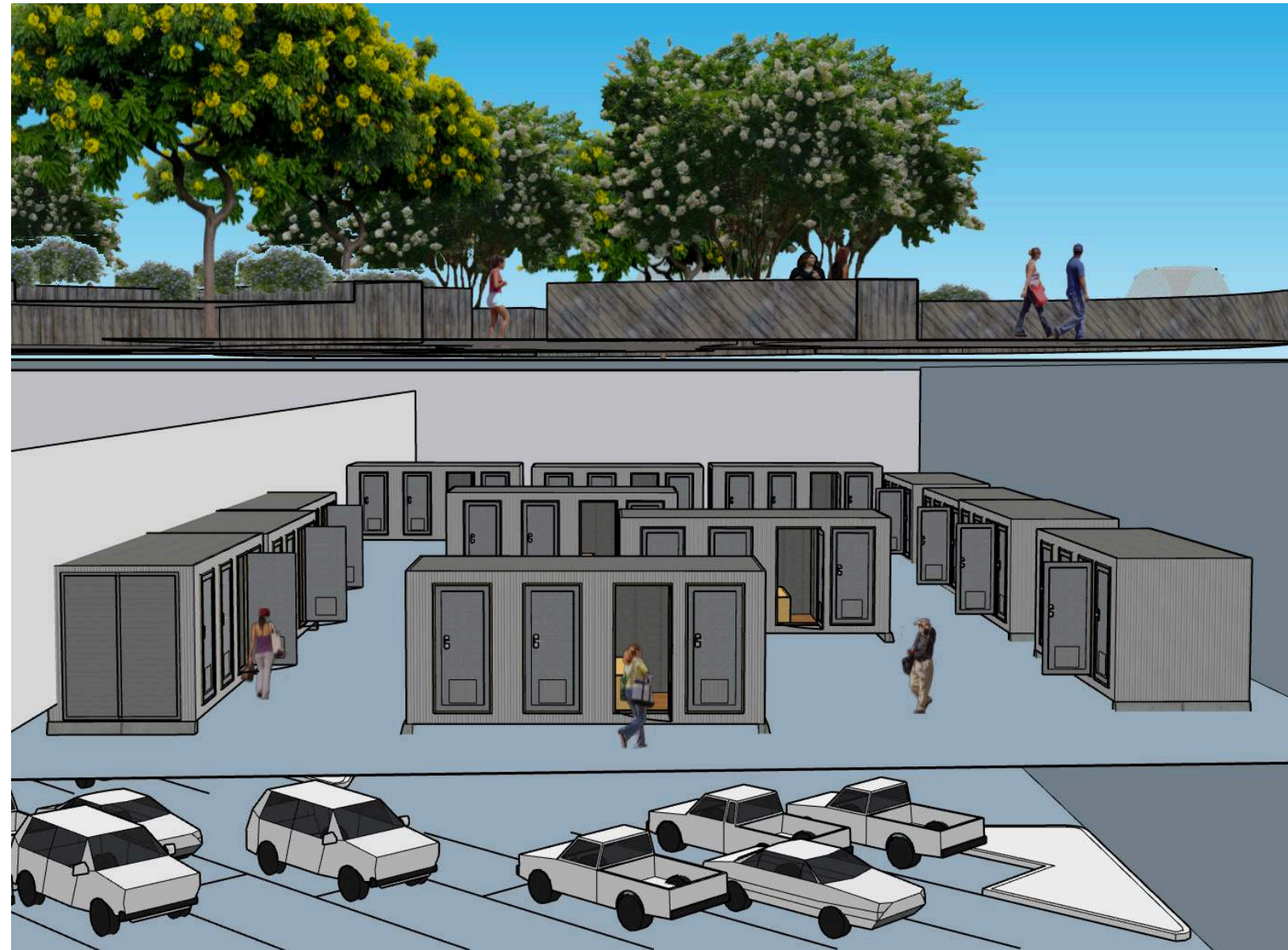
KEY MAP



6. TEMPORARY SHELTER FOR UNHOUSED

Notes:

These very inexpensive housing units are meant to temporarily give a person a place to sleep when facing mental and substance use disorders, trauma and violence, domestic violence, justice-system involvement, sudden serious illness, divorce, death of a partner, and disabilities. The Social Service Agency in a building adjacent to this site will be able to place people in an emergency and then work with them to find a permanent solution for their housing.



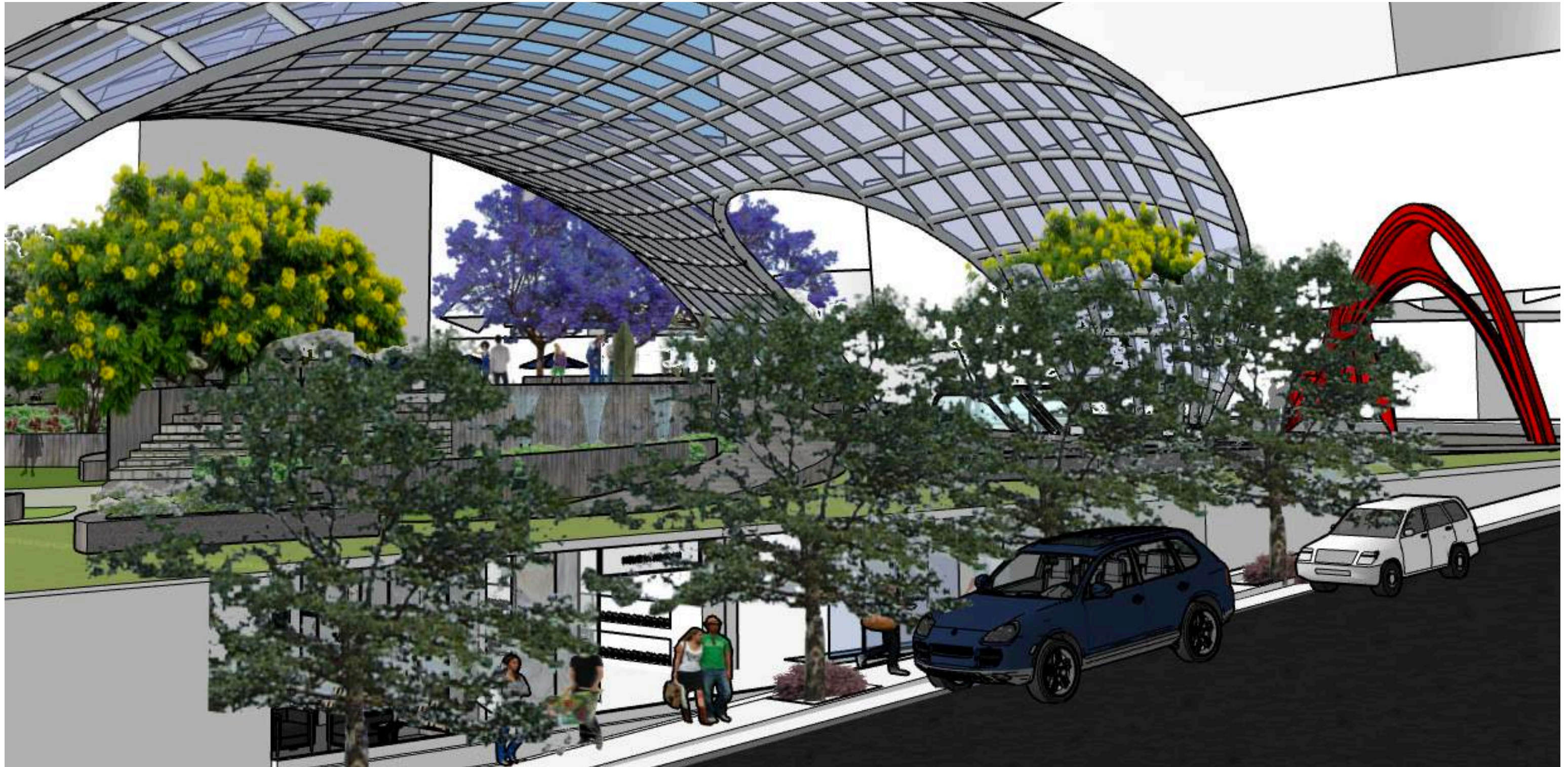
MAIN ENTRANCE TO 12GO NORTH

TEMPORARY SHELTER FOR UNHOUSED

2ND LEVEL OF UNDERGROUND PARKING



7. 1ST STREET SHOPS AND PARKING PEDESTRIAN ENTRANCE





PLANTING PLAN

TREES



CASSIA LEPTOPHYLLA  
GOLD MEDALLION



HANDROTHANUS HEPTAPHYLLUS  
PINK TRUMPET



JACARANDA MIMOSIFOLIA  
JACARANDA



LAGERSTROEMIA INDICA  
CREPE-MYRTLE



OLEA EUROPAEA 'SWAN HILL'  
OLIVE TREE

TREES



PINUS HALEPENSIS  
ALEPPO PINE



PLATANUS X ACERIFOLIA  
LONDON PLANE

SHRUBS



LAURUS NOBILIS  
BAY LAUREL



LOROPETALUM CHINENSE  
CHINESE FRINGE FLOWER



HETEROMELES ARBUTIFOLIA  
TOYON

GROUNDCOVERS



ACHILLEA MILLEFOLIUM  
COMMON YARROW



CEANOTHUS GRISEUS HORIZONTALIS  
CEANOTHUS



LANTANA MONTEVIDENSIS  
LANTANA

GRASSES

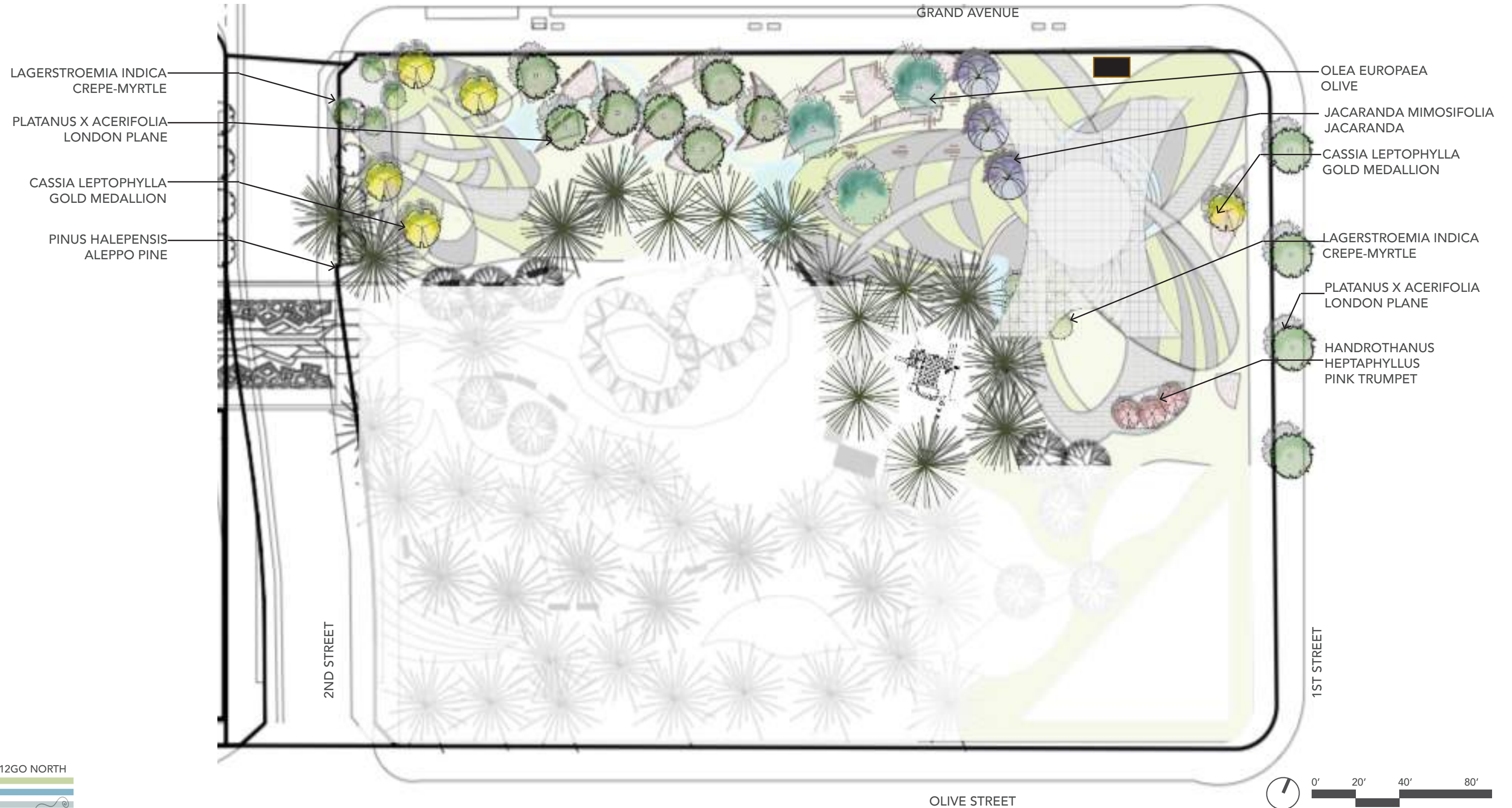


FESTUCA GLAUCA  
BLUE FESCUE



KURAPIA  
KURAPIA







DECOMPOSED GRANITE PATH - D.G. TO BE NATRICIL STABILIZED DECOMPOSED GRANITE FROM GAILS MATERIALS - GRAPHITE GREY



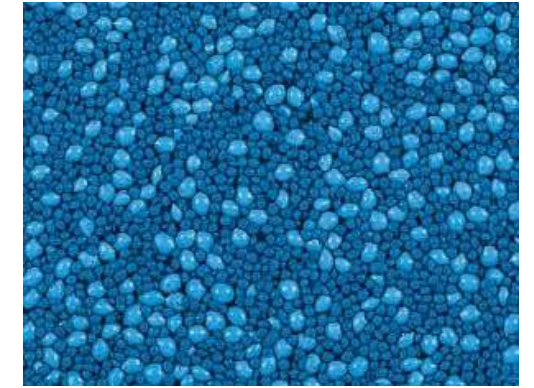
Aegis II Xtreme FENCING FOR PLAYGROUND



GRASSPAV2



ADA COMPLIANT PERMEABLE PAVER - HATTERAS



NEW RESILIENT RUBBER SURFACING INSTALLATION OF PEBBLEFLEX 2.0, MANUFACTURER: LANDSCAPE STRUCTURES



AquaELITE 61" Reclaimed Teak Outdoor Bench with Arms



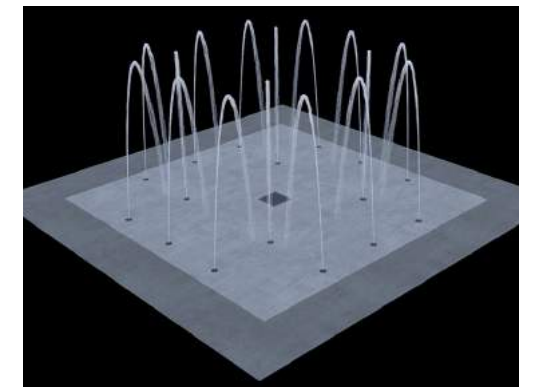
BICYCLE RACK - CUSTOM CASCADE NUMBER 2175-08/SUPER CYCLOPS/STAINLESS STEEL



5 PC SUSSEX TEAK DINING SET - Round 48" Dia Folding Table



ALL INCLUSIVE PLAYGROUND EQUIPEMENT FOR 5 -12 YEAR OLD CHILDREN



SPLASH PADS

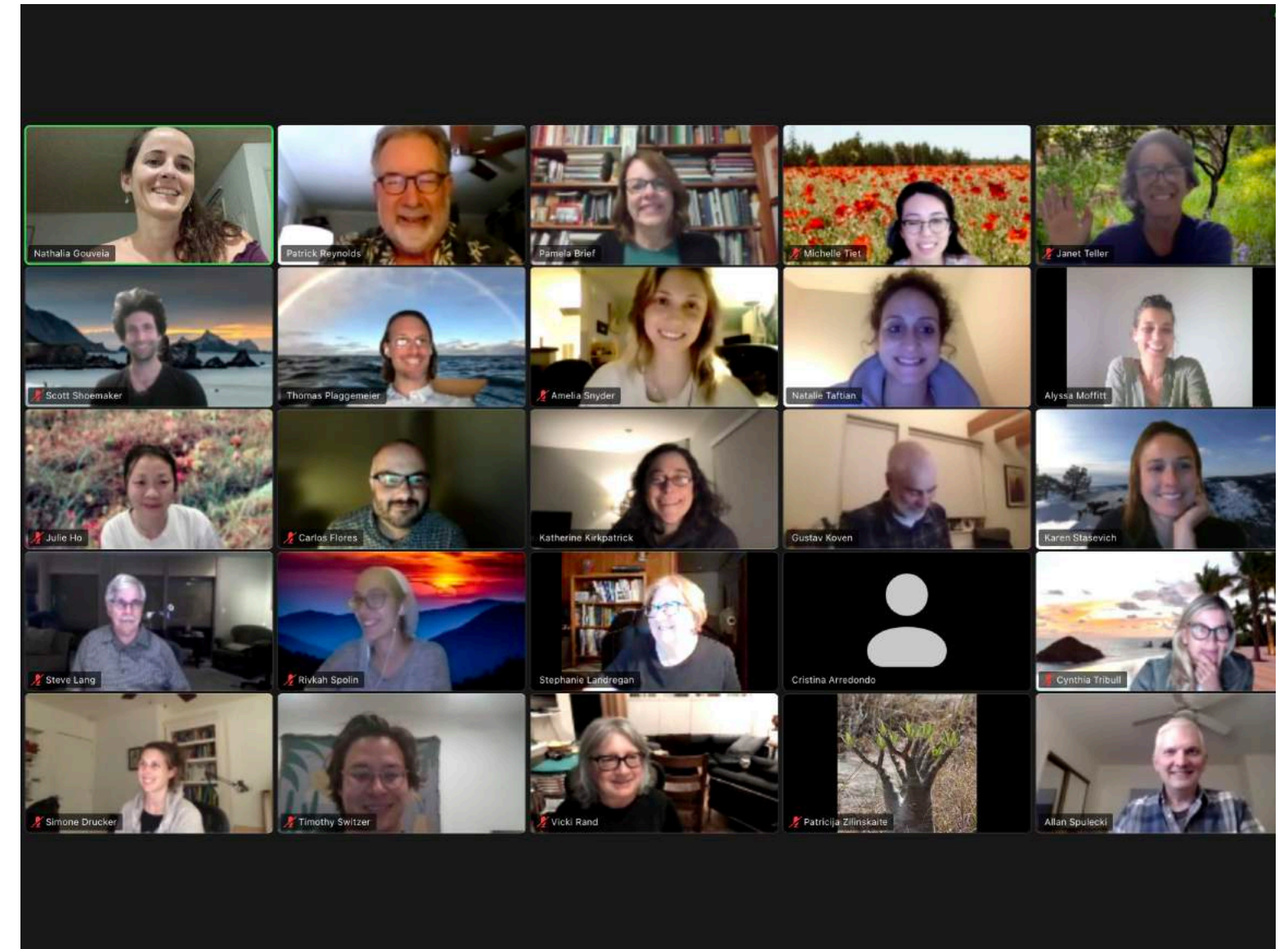


1. <https://worldlandscapearchitect.com/550-madison-garden-moves-forward-with-approval-from-nyc/#.YInDIS-cZBw>
2. <https://worldlandscapearchitect.com/the-hudson-yards-public-square-and-gardens-envisioned-as-a-contemporary-plaza/#.YInMRC-cZBw>
3. <https://www.splashpadsusa.com>
4. <https://gailmaterials.net/product/natracil-stabilized-decomposed-granite/>
5. <https://www.invisiblestructures.com/products/grasspave-2/>
6. <https://calscape.org>
7. <https://www.smgrowers.com>
8. Panoramic Studio / LANDPROCESS via V2COM
9. <https://www.pinterest.com/pin/373095150361365728/>
10. <https://6abc.com/splash-park-water-safety-organisms-in-suburban-testing-labs-city-pools/4041916/>
11. <https://www.laparks.org/park/albion-riverside-park>
12. <https://www.lamag.com/culturefiles/albion-riverside-park/>
13. <https://www.lumens.com/dorchester-outdoor-postmount-by-troy-lighting-uu163726.html?cgid=40#prefn1=retailSalePrice&prefv1=%242000%20and%20above%7C%241000%20-%20%242000&prefn2=tradeOnly&prefv2=No&tileIndex=5>
14. <https://www.ameristarfence.com/en/products/fence-systems/aegis2-xtreme-pedestrian-bridge-railing/>
15. Many of the photographs were self taken.

## THANK YOU

Thank you to all of my teachers and cohorts.

The class was taught on zoom and had 2 site visits. We worked in two different groups and individually. The semester was challenging, yet I believe my skills are improved.



# LD7 BOOK APPENDIX

